

Anti-THY1 antibody (20-130) (STJ25849)

STJ25849

GENERAL INFORMATION

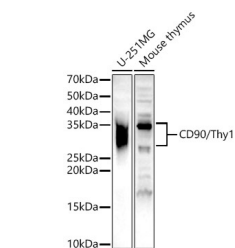
Product Type	Primary antibodies
Short Description	
Applications	WB/IF/ICC/ELISA
Host/Source	Rabbit
Reactivity	Human/Mouse

PRODUCT PROPERTIES

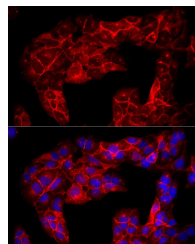
Clonality	Polyclonal
Clone ID	
Concentration	Lot specific
Conjugation	Unconjugated
Purification	Affinity purification
Dilution Range	WB:1:500-1:1000 IF/ICC:1:50-1:200 ELISA:Recommended starting concentration is 1 µg/mL. Please optimize the concentration based on your specific assay requirements.
Formulation	PBS with 0.05% Proclin300, 50% Glycerol, pH 7.3.
Isotype	IgG
Storage	Store at -20°C for up to 1 year from the date of receipt, and avoid repeat freeze-thaw cycles.
Instruction	

TARGET INFORMATION

Gene ID	7070
Gene Symbol	THY1
Uniprot ID	THY1_HUMAN
Immunogen	
Immunogen Region	20-130
Specificity	Recombinant fusion protein containing a sequence corresponding to amino acids 20-130 of human CD90/Thy1 (NP_006279.2). QKVTSLTACLVDQSLRLDCR HENTSSSPIQYEFSLTRETK KHVLFGTGVPEHTYRSRTN FTSKYNMKVLYLSAFTSKDE
Immunogen Sequence	GYTCALHHS GHSPPISSQN VTVLRDKLVKC



Western blot analysis of various lysates, using CD90/Thy1 antibody (STJ25849) at 1:700 dilution. Secondary antibody: HRP Goat Anti-rabbit IgG (H+L) (STJ5000856) at 1:10000 dilution. Lysates/proteins: 25 µg per lane. Blocking buffer: 3% non-fat dry milk in TBST. Detection: ECL Basic Kit. Exposure time: 180s.



Immunofluorescence analysis of U2OS cells using CD90/Thy1 rabbit polyclonal antibody (STJ25849) at dilution of 1:50 (40x lens). Blue: DAPI for nuclear staining.