

Anti-TCF4 antibody (1-210) (STJ25793)

STJ25793

GENERAL INFORMATION

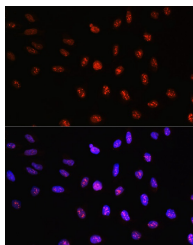
Product Type	Primary antibodies
Short Description	
Applications	WB/IF/ICC/ELISA
Host/Source	Rabbit
Reactivity	Human/Mouse/Rat

PRODUCT PROPERTIES

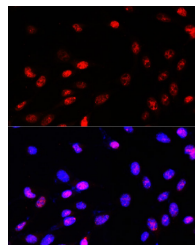
Clonality	Polyclonal
Clone ID	
Concentration	Lot specific
Conjugation	Unconjugated
Purification	Affinity purification
Dilution	WB:1:500-1:1000
Range	IF/CC:1:50-1:200
	ELISA:Recommended starting concentration is 1 μ g/mL. Please optimize the concentration based on your specific assay requirements.
Formulation	PBS with 0.02% Sodium Azide, 50% Glycerol, pH 7.3.
Isotype	IgG
Storage Instruction	Store at -20°C for up to 1 year from the date of receipt, and avoid repeat freeze-thaw cycles.

TARGET INFORMATION

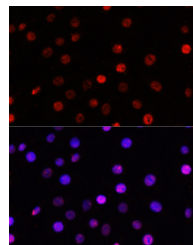
Gene ID	6925
Gene Symbol	TCF4
Uniprot ID	ITF2_HUMAN
Immunogen	
Immunogen Region	1-210
Specificity	Recombinant fusion protein containing a sequence corresponding to amino acids 1-210 of human TCF4 (NP_003190.1).
Immunogen Sequence	MHHQQRMAALGTDKELSDLL DFSAMFSPPVSSGKNGPTSL ASGHFTGSNVEDRSSGSGSWG NGGHPSPSRNYGDGTPYDHM TSRDLGSHDNLSPPFVNSRI QSKTERGSYSSYGRESNLQG CHQQSLGGLGMDMGNPGTLS PTKPGSQYYQYSSNNPRRRP LHSSAMEVQTKVKRVPPGL PSSVYAPSASTADYNRDSFG YPSSKPATST



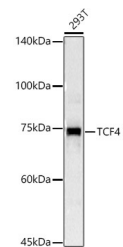
Immunofluorescence analysis of U-2 OS cells using TCF4 Rabbit polyclonal antibody (STJ25793) at dilution of 100 (40x lens). Secondary antibody: Cy3 Goat Anti-Rabbit IgG (H+L) at 1:500 dilution. Blue: DAPI for nuclear staining.



Immunofluorescence analysis of NIH-3T3 cells using TCF4 Rabbit polyclonal antibody (STJ25793) at dilution of 100 (40x lens). Secondary antibody: Cy3 Goat Anti-Rabbit IgG (H+L) at 1:500 dilution. Blue: DAPI for nuclear staining.



Immunofluorescence analysis of C6 cells using TCF4 Rabbit polyclonal antibody (STJ25793) at dilution of 100 (40x lens). Secondary antibody: Cy3 Goat Anti-Rabbit IgG (H+L) at 1:500 dilution. Blue: DAPI for nuclear staining.



Western blot analysis of lysates from 293T cells, using TCF4 Rabbit polyclonal antibody (STJ25793) at 1:1000 dilution. Secondary antibody: HRP Goat Anti-Rabbit IgG (H+L) (STJ5000856) at 1:10000 dilution. Lysates/proteins: 25 μ g per lane. Blocking buffer: 3% nonfat dry milk in TBST. Detection: ECL Basic Kit. Exposure time: 3s.

This product is suitable for in-vitro studies under the RESEARCH USE ONLY [RUO] licence. This product must not be used as for diagnostic or other medical purposes.

St John's Laboratory Ltd, Knowledge Dock Business Centre, University Way, London, E16 2RD | Tel: 0208 223 3081