

Anti-STK11 antibody (134-433) (STJ25732)

STJ25732

GENERAL INFORMATION

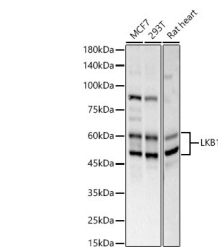
| | |
|--------------------------|-----------------------|
| Product Type | Primary antibodies |
| Short Description | |
| Applications | WB/IHC-P/IF/ICC/ELISA |
| Host/Source | Rabbit |
| Reactivity | Human/Mouse/Rat |

PRODUCT PROPERTIES

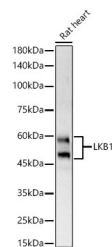
| | |
|----------------------|--|
| Clonality | Polyclonal |
| Clone ID | |
| Concentration | Lot specific |
| Conjugation | Unconjugated |
| Purification | Affinity purification |
| Dilution | WB:1:500-1:1000 |
| Range | IHC-P:1:50-1:200 IF/ICC:1:50-1:200 ELISA:Recommended starting concentration is 1 Mu g/mL. Please optimize the concentration based on your specific assay requirements. |
| Formulation | PBS with 0.02% Sodium Azide, 50% Glycerol, pH 7.3. |
| Isotype | IgG |
| Storage | Store at -20°C for up to 1 year from the date of receipt, and avoid repeat freeze-thaw cycles. |
| Instruction | |

TARGET INFORMATION

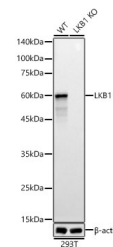
| | |
|---------------------------|---|
| Gene ID | 6794 |
| Gene Symbol | STK11 |
| Uniprot ID | STK11_HUMAN |
| Immunogen | |
| Immunogen Region | 134-433 |
| Specificity | Recombinant fusion protein containing a sequence corresponding to amino acids 134-433 of human LKB1 (NP_000446.1). |
| Immunogen Sequence | CGMQEMLDSVPEKRFVPCQA HG YFCQLIDGLEYLHSQGIV HKDIKPGNLLTTGGTLKIS DLGVAEALHPFAADDTORTS QGSPAFQPEIANGLDTFSG FKVDIWSAGVTLYNITTGLY PFEGDNIYKLFENIGKGSYA IPGDCGPPLSDLLKGMLEYE PAKRFSIRQIRQHSWFRKKH PPAAEPVPIPPSPDTKDRWR SMTVPYLEDLHGADEDEDL FDIEDDIYTQDFTVPQGV |



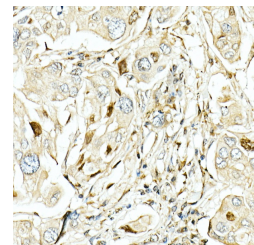
Western blot analysis of various lysates, using LKB1 antibody (STJ25732) at 1:600 dilution. Secondary antibody: HRP Goat Anti-rabbit IgG (H+L) (STJS000856) at 1:10000 dilution. Lysates/proteins: 25 Mu g per lane. Blocking buffer: 3% non-fat dry milk in TBST. Detection: ECL Basic Kit. Exposure time: 30s.



Western blot analysis of mouse heart, using LKB1 antibody (STJ25732) at 1:600 dilution. Secondary antibody: HRP Goat Anti-rabbit IgG (H+L) (STJS000856) at 1:10000 dilution. Lysates/proteins: 25 Mu g per lane. Blocking buffer: 3% non-fat dry milk in TBST. Detection: ECL Basic Kit. Exposure time: 30s.



Western blot analysis of various lysates, using [KO Validated] LKB1 rabbit polyclonal antibody (STJ25732) at 1:7000 dilution. Secondary antibody: HRP Goat Anti-rabbit IgG (H+L) (STJS000856) at 1:10000 dilution. Lysates/proteins: 25 Mu g per lane. Blocking buffer: 3% non-fat dry milk in TBST. Detection: ECL Basic Kit. Exposure time: 60s.



Immunohistochemistry analysis of paraffin-embedded human lung cancer using LKB1 rabbit polyclonal antibody (STJ25732) at dilution of 1:50 (40x lens). Perform high pressure antigen retrieval with 10 mM citrate buffer pH 6.0 before commencing with immunohistochemistry staining protocol.

This product is suitable for in-vitro studies under the RESEARCH USE ONLY [RUO] licence. This product must not be used as for diagnostic or other medical purposes.
St John's Laboratory Ltd, Knowledge Dock Business Centre, University Way, London, E16 2RD | Tel: 0208 223 3081