

Anti-STAT6 antibody (501-600) (STJ25726)
STJ25726

GENERAL INFORMATION

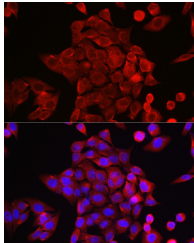
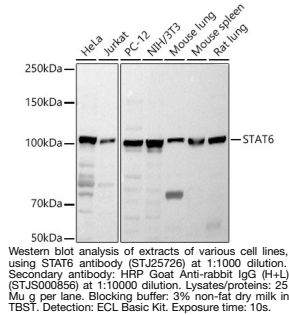
Product Type	Primary antibodies
Short Description	
Applications	WB/IF/ICC/ELISA
Host/Source	Rabbit
Reactivity	Human/Mouse/Rat

PRODUCT PROPERTIES

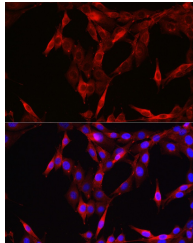
Clonality	Polyclonal
Clone ID	
Concentration	Lot specific
Conjugation	Unconjugated
Purification	Affinity purification
Dilution	WB:1:500-1:1000
Range	IF/CC:1:50-1:200 ELISA:Recommended starting concentration is 1 μ g/mL. Please optimize the concentration based on your specific assay requirements.
Formulation	PBS with 0.05% Proclin300, 50% Glycerol, pH 7.3.
Isotype	IgG
Storage Instruction	Store at -20°C for up to 1 year from the date of receipt, and avoid repeat freeze-thaw cycles.

TARGET INFORMATION

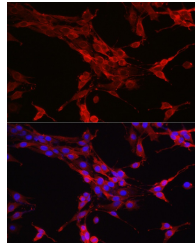
Gene ID	6778
Gene Symbol	STAT6
Uniprot ID	STAT6_HUMAN
Immunogen	
Immunogen Region	501-600
Specificity	A synthetic peptide corresponding to a sequence within amino acids 501-600 of human STAT6 (NP_003144.3).
Immunogen Sequence	QFNKEILLGRGFTFWQWFDG VLDLTKRCLRSYWSDRLIIG FISKQYVTSLLLNEPDGTFL LRFSDSEIGGITIAHVIRGQ DGSPQIENIQPFSAKDLSIR SLGDRIRDLAQLKNLYPKKP KDEAFRSHYKPEQMGKDGRG YVPATIKMTVERDQPLPTPE LQMPTMVPSYDLGMAPDSSM SMQLGPDMPVQVYPHSHSI PPYQGLSPEESVNVLSAFQE PHLQMPPSLGQMSLPFDQP



Immunofluorescence analysis of HeLa cells using STAT6 rabbit polyclonal antibody (STJ25726) at dilution of 1:200 (40x lens). Blue: DAPI for nuclear staining.



Immunofluorescence analysis of NIH/3T3 cells using STAT6 rabbit polyclonal antibody (STJ25726) at dilution of 1:200 (40x lens). Blue: DAPI for nuclear staining.



Immunofluorescence analysis of PC-12 cells using STAT6 rabbit polyclonal antibody (STJ25726) at dilution of 1:200 (40x lens). Blue: DAPI for nuclear staining.

This product is suitable for in-vitro studies under the RESEARCH USE ONLY [RUO] licence. This product must not be used as for diagnostic or other medical purposes.
St John's Laboratory Ltd, Knowledge Dock Business Centre, University Way, London, E16 2RD | Tel: 0208 223 3081