

**Anti-SPP1 antibody (17-314) (STJ25679)**  
STJ25679

**GENERAL INFORMATION**

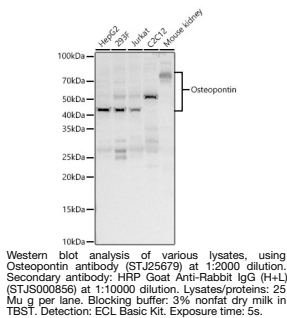
|                          |                    |
|--------------------------|--------------------|
| <b>Product Type</b>      | Primary antibodies |
| <b>Short Description</b> |                    |
| <b>Applications</b>      | WB/ELISA           |
| <b>Host/Source</b>       | Rabbit             |
| <b>Reactivity</b>        | Human/Mouse/Rat    |

**PRODUCT PROPERTIES**

|                      |   |
|----------------------|---|
| <b>Clonality</b>     | Polyclonal  |
| <b>Clone ID</b>      |   |
| <b>Concentration</b> | Lot specific  |
| <b>Conjugation</b>   | Unconjugated  |
| <b>Purification</b>  | Affinity purification   |
| <b>Dilution</b>      | WB:1:1000-1:5000  |
| <b>Range</b>         | ELISA:Recommended starting concentration is 1 Mu g/mL. Please optimize the concentration based on your specific assay requirements. |
| <b>Formulation</b>   | PBS with 0.05% Proclin300, 50% Glycerol, pH 7.3.  |
| <b>Isotype</b>       | IgG   |
| <b>Storage</b>       | Store at -20°C for up to 1 year from the date of receipt, and avoid repeat freeze-thaw cycles.                                      |
| <b>Instruction</b>   |   |

**TARGET INFORMATION**

|                           |   |
|---------------------------|---|
| <b>Gene ID</b>            | 6696  |
| <b>Gene Symbol</b>        | SPP1  |
| <b>Uniprot ID</b>         | OSTP_HUMAN  |
| <b>Immunogen</b>          |   |
| <b>Immunogen Region</b>   | 17-314  |
| <b>Specificity</b>        | Recombinant fusion protein containing a sequence corresponding to amino acids 17-314 of human Osteopontin (NP_001035147.1).   |
| <b>Immunogen Sequence</b> | IPVKQADSGSSEKQLYNKY PDAVATWLNPDPSQKQNLPAQNAVSSSEETNDFKQETLPS KSNESHDMDDMDDDDDDH<br>VDSQDSIDSNDDVDVDDDD SHQSDSHHSDESDELVTDF PTDLPATEVFTPVVPTVDY DGRGDSVVYGLRSKSKKFR<br>PDIQYPDATDEDTSHMESE ELNGAYKAIPVAQDLNAPSD WDSRGKDSYETSQLDDQSAE THSHKQSRLYKRKANDESN |



This product is suitable for in-vitro studies under the RESEARCH USE ONLY [RUO] licence. This product must not be used as for diagnostic or other medical purposes.  
St John's Laboratory Ltd, Knowledge Dock Business Centre, University Way, London, E16 2RD | Tel: 0208 223 3081