

## Anti-SOD1 antibody (2-154) (STJ25653)

STJ25653

### GENERAL INFORMATION

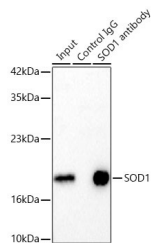
<b>Product Type</b>	Primary antibodies
<b>Short Description</b>	
<b>Applications</b>	WB/IHC-P/IF/ICC/IP/ELISA
<b>Host/Source</b>	Rabbit
<b>Reactivity</b>	Human/Mouse/Rat

### PRODUCT PROPERTIES

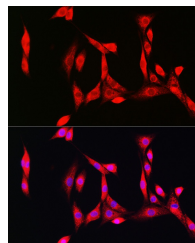
<b>Clonality</b>	Polyclonal
<b>Clone ID</b>	
<b>Concentration</b>	Lot specific
<b>Conjugation</b>	Unconjugated
<b>Purification</b>	Affinity purification
<b>Dilution Range</b>	WB:1:500-1:1000 IHC-P:1:50-1:200 IF/ICC:1:50-1:200 IP:0.5 Mu g-4 Mu g antibody for 200 Mu g-400 Mu g extracts of whole cells ELISA:Recommended starting concentration is 1 Mu g/mL. Please optimize the concentration based on your specif
<b>Formulation</b>	PBS with 0.05% Proclin300, 50% Glycerol, pH 7.3.
<b>Isotype</b>	IgG
<b>Storage</b>	Store at-20°C for up to 1 year from the date of receipt, and avoid repeat freeze-thaw cycles.
<b>Instruction</b>	

### TARGET INFORMATION

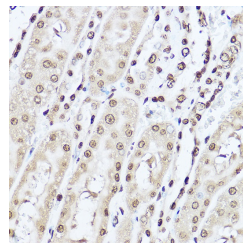
<b>Gene ID</b>	6647
<b>Gene Symbol</b>	SOD1
<b>Uniprot ID</b>	SODC_HUMAN
<b>Immunogen</b>	
<b>Immunogen Region</b>	2-154
<b>Specificity</b>	Recombinant fusion protein containing a sequence corresponding to amino acids 2-154 of human SOD1 (NP_000445.1).
<b>Immunogen Sequence</b>	ATKAVCVLKGDGPVQGIINF EQKESNGPVKVVWGSIKGLTE GLHGFHVHEFGDNTAGCTSA GPHFNPLSRKHGGGPKDEERH VGDNLNVTADKDGADVDSIE DSVISLSGDHCIGRTLTVVH EKADDLGKGGNEESTKTGNA GSRLACGVIGIAQ



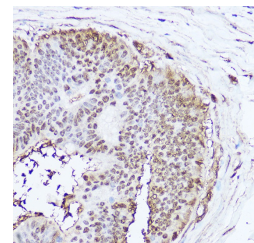
Immunoprecipitation of SOD1 in 300 µg extracts from MCF7 cells using 3 µg SOD1 Rabbit polyclonal antibody (STJ25653). Western blot analysis was performed using SOD1 Rabbit polyclonal antibody (STJ25653) at 1:1000 dilution.



Immunofluorescence analysis of NIH/3T3 cells using SOD1 Rabbit polyclonal antibody (STJ25653) at dilution of 1:100 (40x lens). Secondary antibody: Cy3 Goat Anti-Rabbit IgG (H+L) at 1:500 dilution. Blue: DAPI for nuclear staining.



Immunohistochemistry analysis of SOD1 in paraffin-embedded rat kidney using SOD1 Rabbit polyclonal antibody (STJ25653) at dilution of 1:100 (40x lens). Perform high pressure antigen retrieval with 10 mM citrate buffer pH 6.0 before commencing with immunohistochemistry staining protocol.



Immunohistochemistry analysis of SOD1 in paraffin-embedded human colon carcinoma using SOD1 Rabbit polyclonal antibody (STJ25653) at dilution of 1:100 (40x lens). Perform high pressure antigen retrieval with 10 mM citrate buffer pH 6.0 before commencing with immunohistochemistry staining protocol.

This product is suitable for in-vitro studies under the RESEARCH USE ONLY [RUO] licence. This product must not be used as for diagnostic or other medical purposes.  
St John's Laboratory Ltd, Knowledge Dock Business Centre, University Way, London, E16 2RD | Tel: 0208 223 3081