

Anti-SOCS3 antibody (1-225) (STJ25651)
STJ25651

GENERAL INFORMATION

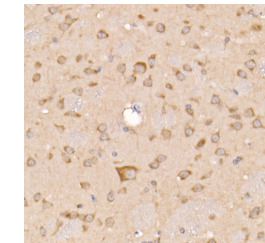
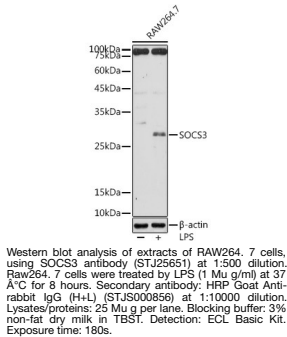
Product Type	Primary antibodies
Short Description	
Applications	WB/IHC-P/IF/ICC/ELISA
Host/Source	Rabbit
Reactivity	Human/Mouse/Rat

PRODUCT PROPERTIES

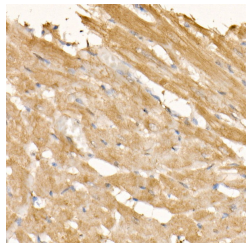
Clonality	Polyclonal
Clone ID	
Concentration	Lot specific
Conjugation	Unconjugated
Purification	Affinity purification
Dilution	WB:1:100-1:500
Range	IHC-P:1:50-1:200 IF/ICC:1:50-1:200 ELISA:Recommended starting concentration is 1 μ g/mL. Please optimize the concentration based on your specific assay requirements.
Formulation	PBS with 0.05% Proclin300, 50% Glycerol, pH 7.3.
Isotype	IgG
Storage	Store at -20°C for up to 1 year from the date of receipt, and avoid repeat freeze-thaw cycles.
Instruction	

TARGET INFORMATION

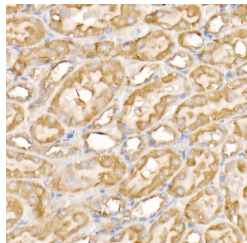
Gene ID	9021
Gene Symbol	SOCS3
Uniprot ID	SOCS3_HUMAN
Immunogen	
Immunogen Region	1-225
Specificity	A synthetic peptide corresponding to a sequence within amino acids 1-225 of human SOCS3 (NP_003946.3).
Immunogen Sequence	MVTHSKFPAAGMSRPLDTSL RLKTFSSKSEYQLVNAVVRK LQESGFYWSAVTGGEANLLL SAEPAGTFLIRDSSDQRHFF TLSVKQTQSGTKNLRIQCEGG SFSLQSDPRSTQPVPRFDCV LKLVHHYMPPPGAPSPFPSP TPSPSEVPEQPSAQPLPGSP PRRAYIYSGGEKIPLVLSR PLSSNVATLQHLCRKTVNGH LDSYEKVTQLPGPIREFLDQ YDAPL



Immunohistochemistry analysis of paraffin-embedded rat brain using SOCS3 rabbit polyclonal antibody (STJ25651) at dilution of 1:50 (40x lens). Perform high pressure antigen retrieval with 10 mM citrate buffer pH 6.0 before commencing with immunohistochemistry staining protocol.



Immunohistochemistry analysis of paraffin-embedded rat heart using SOCS3 rabbit polyclonal antibody (STJ25651) at dilution of 1:50 (40x lens). Perform high pressure antigen retrieval with 10 mM citrate buffer pH 6.0 before commencing with immunohistochemistry staining protocol.



Immunohistochemistry analysis of paraffin-embedded rat kidney using SOCS3 rabbit polyclonal antibody (STJ25651) at dilution of 1:50 (40x lens). Perform high pressure antigen retrieval with 10 mM citrate buffer pH 6.0 before commencing with immunohistochemistry staining protocol.

This product is suitable for in-vitro studies under the RESEARCH USE ONLY [RUO] licence. This product must not be used as for diagnostic or other medical purposes.
St John's Laboratory Ltd, Knowledge Dock Business Centre, University Way, London, E16 2RD | Tel: 0208 223 3081