

Anti-SNAP29 antibody (1-258) (STJ25638)

STJ25638

GENERAL INFORMATION

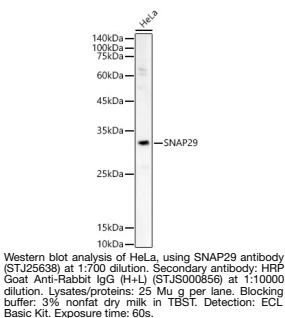
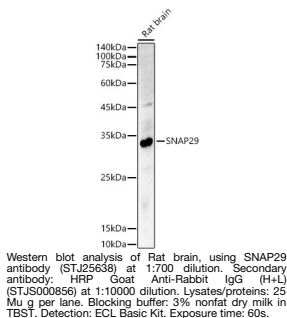
Product Type	Primary antibodies
Short Description	
Applications	WB/ELISA
Host/Source	Rabbit
Reactivity	Human/Mouse/Rat

PRODUCT PROPERTIES

Clonality	Polyclonal
Clone ID	
Concentration	Lot specific
Conjugation	Unconjugated
Purification	Affinity purification
Dilution	WB:1:500-1:1000
Range	ELISA:Recommended starting concentration is 1 μ g/mL. Please optimize the concentration based on your specific assay requirements.
Formulation	PBS with 0.02% Sodium Azide, 50% Glycerol, pH 7.3.
Isotype	IgG
Storage	Store at -20°C for up to 1 year from the date of receipt, and avoid repeat freeze-thaw cycles.
Instruction	

TARGET INFORMATION

Gene ID	9342
Gene Symbol	SNAP29
Uniprot ID	SNP29_HUMAN
Immunogen	
Immunogen Region	1-258
Specificity	Recombinant fusion protein containing a sequence corresponding to amino acids 1-258 of human SNAP29 (NP_004773.1).
Immunogen Sequence	MSAYPKSYNPFDDGDEGA RPAPWRDARDLPDGPADAPAD RQQLRQEVLRRAEATAAST SRSLALMYESEKVGVASSEE LARQRGVLERTEKMDKMDQ DLKISQKHINSIKSVFGLV NYFKSKPVETPPEQNGTLTS QPNNRLKEAISTSEKEAKY QASHPNLRKLDLTDTPVPRGA GSAMSTDAYPKNPHLAYHQ KIDSNLDELSMGLRLKDIA LGMQTEIEEQDDILRLTT



This product is suitable for in-vitro studies under the RESEARCH USE ONLY [RUO] licence. This product must not be used as for diagnostic or other medical purposes.
St John's Laboratory Ltd, Knowledge Dock Business Centre, University Way, London, E16 2RD | Tel: 0208 223 3081