

Anti-SLC39A4 antibody (23-327) (STJ25583)

STJ25583

GENERAL INFORMATION

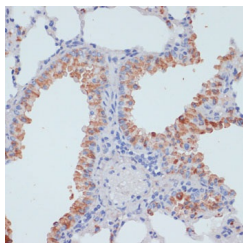
Product Type	Primary antibodies
Short Description	
Applications	WB/IHC-P/ELISA
Host/Source	Rabbit
Reactivity	Human/Mouse/Rat

PRODUCT PROPERTIES

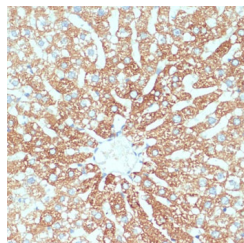
Clonality	Polyclonal
Clone ID	
Concentration	Lot specific
Conjugation	Unconjugated
Purification	Affinity purification
Dilution	WB:1:1000-1:5000
Range	IHC-P:1:50-1:100
	ELISA:Recommended starting concentration is 1 μ g/mL. Please optimize the concentration based on your specific assay requirements.
Formulation	PBS with 0.02% Sodium Azide, 50% Glycerol, pH 7.3.
Isotype	IgG
Storage Instruction	Store at -20°C for up to 1 year from the date of receipt, and avoid repeat freeze-thaw cycles.

TARGET INFORMATION

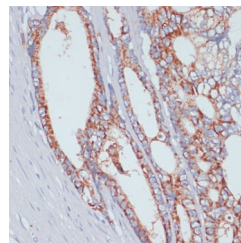
Gene ID	55630
Gene Symbol	SLC39A4
Uniprot ID	S39A4_HUMAN
Immunogen	
Immunogen Region	23-327
Specificity	Recombinant fusion protein containing a sequence corresponding to amino acids 23-327 of human SLC39A4 (NP_570901.2).
Immunogen Sequence	SPPAGLLSLLTSGQGALDQE ALGGLLNTLADRVHCANGPC GKCLSVEDALGLGEPEGSGL PPGPVLEARYVARLSAAAVL YLSNPEGTCEDARAGLWASH ADHLLALLESPKALTPGLSW LLQRMQARAAGQTPKTACVD IPQLLEEAVGAGAPGSAGGV LAALLDHVRSGSCFHLPSP QYFVDFVQQHSSEVPMTLA ELSALMQRLGVGREAHSDHS HRHRGASSRDPVPLISSN



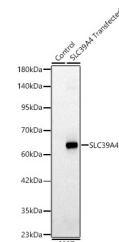
Immunohistochemistry analysis of SLC39A4 in paraffin-embedded mouse lung using SLC39A4 Rabbit polyclonal antibody (STJ25583) at dilution of 1:100 (40x lens). Perform microwave antigen retrieval with 10 mM PBS buffer pH 7.2 before commencing with immunohistochemistry staining protocol.



Immunohistochemistry analysis of SLC39A4 in paraffin-embedded rat liver using SLC39A4 Rabbit polyclonal antibody (STJ25583) at dilution of 1:100 (40x lens). Perform microwave antigen retrieval with 10 mM PBS buffer pH 7.2 before commencing with immunohistochemistry staining protocol.



Immunohistochemistry analysis of SLC39A4 in paraffin-embedded human colon carcinoma using SLC39A4 Rabbit polyclonal antibody (STJ25583) at dilution of 1:100 (40x lens). Perform microwave antigen retrieval with 10 mM PBS buffer pH 7.2 before commencing with immunohistochemistry staining protocol.



Western blot analysis of lysates from wild type (WT) and 293T cells transfected with SLC39A4 using SLC39A4 Rabbit polyclonal antibody (STJ25583) at 1:2000 dilution. Secondary antibody: HRP Goat Anti-Rabbit IgG (H+L) (STJS000856) at 1:10000 dilution. Lysates/proteins: 25 μ g per lane. Blocking buffer: 3% nonfat dry milk in TBST. Detection: ECL Basic Kit. Exposure time: 30s.

This product is suitable for in-vitro studies under the RESEARCH USE ONLY [RUO] licence. This product must not be used as for diagnostic or other medical purposes.
St John's Laboratory Ltd, Knowledge Dock Business Centre, University Way, London, E16 2RD | Tel: 0208 223 3081