

Anti-SLC25A4 antibody (145-159) (STJ25571)

STJ25571

GENERAL INFORMATION

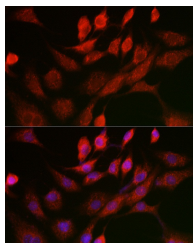
Product Type	Primary antibodies
Short Description	
Applications	WB/IF/ICC/ELISA
Host/Source	Rabbit
Reactivity	Human/Mouse/Rat

PRODUCT PROPERTIES

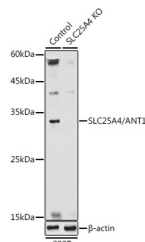
Clonality	Polyclonal
Clone ID	
Concentration	Lot specific
Conjugation	Unconjugated
Purification	Affinity purification
Dilution	WB: 1:500-1:1000
Range	IF/CC: 1:50-1:200
	ELISA: Recommended starting concentration is 1 μ g/mL. Please optimize the concentration based on your specific assay requirements.
Formulation	PBS with 0.02% Sodium Azide, 50% Glycerol, pH 7.3.
Isotype	IgG
Storage Instruction	Store at -20°C for up to 1 year from the date of receipt, and avoid repeat freeze-thaw cycles.

TARGET INFORMATION

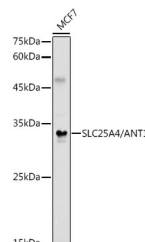
Gene ID	291
Gene Symbol	SLC25A4
Uniprot ID	ADT1_HUMAN
Immunogen	
Immunogen Region	145-159
Specificity	A synthetic peptide corresponding to a sequence within amino acids 101-200 of human SLC25A4/ANT1 (NP_001142.2).
Immunogen Sequence	GGVDRHKQFWRYFAGNLASG GAAGATSLCFVYPLDFARTR LAADVKGAAQREFHGLGDC IIKIFKSDGLRGLYQGFNVSVQGIILYRAAYFGVYDTAKG MLPDPKNVHIFVSWMIAQSV TAVAGLVSYPFDTVRRRRMM QSGRKADIMYTGTVDCWRKIAKDEGAFFKGAWSNVLR GMGAFVLVLVDEIKYYV



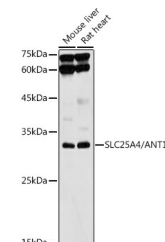
Immunofluorescence analysis of NIH/3T3 cells using SLC25A4/ANT1 Rabbit polyclonal antibody (STJ25571) at dilution of 1:100 (40x lens). Blue: DAPI for nuclear staining.



Western blot analysis of extracts from normal (control) and SLC25A4/ANT1 knockout (KO) 293T cells, using SLC25A4/ANT1 antibody (STJ25571) at 1:1000 dilution. Secondary antibody: HRP Goat Anti-Rabbit IgG (H+L) (STJS000856) at 1:10000 dilution. Lysates/proteins: 25 μ g per lane. Blocking buffer: 3% nonfat dry milk in TBST. Detection: ECL Basic Kit. Exposure time: 30s.



Western blot analysis of extracts of MCF7 cells, using SLC25A4/ANT1 antibody (STJ25571) at 1:1000 dilution. Secondary antibody: HRP Goat Anti-Rabbit IgG (H+L) (STJS000856) at 1:10000 dilution. Lysates/proteins: 25 μ g per lane. Blocking buffer: 3% nonfat dry milk in TBST. Detection: ECL Basic Kit. Exposure time: 30s.



Western blot analysis of extracts of various cell lines, using SLC25A4/ANT1 antibody (STJ25571) at 1:1000 dilution. Secondary antibody: HRP Goat Anti-Rabbit IgG (H+L) (STJS000856) at 1:10000 dilution. Lysates/proteins: 25 μ g per lane. Blocking buffer: 3% nonfat dry milk in TBST. Detection: ECL Basic Kit. Exposure time: 10s.

This product is suitable for in-vitro studies under the RESEARCH USE ONLY [RUO] licence. This product must not be used as for diagnostic or other medical purposes.

St John's Laboratory Ltd, Knowledge Dock Business Centre, University Way, London, E16 2RD | Tel: 0208 223 3081