

Anti-SLC16A7 antibody (379-478) (STJ25553)

STJ25553

GENERAL INFORMATION

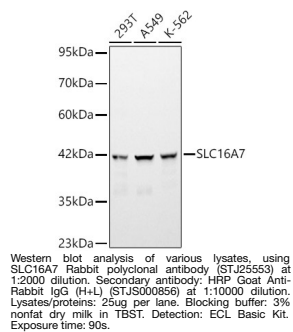
Product Type	Primary antibodies
Short Description	
Applications	WB/ELISA
Host/Source	Rabbit
Reactivity	Human/Rat

PRODUCT PROPERTIES

Clonality	Polyclonal
Clone ID	
Concentration	Lot specific
Conjugation	Unconjugated
Purification	Affinity purification
Dilution Range	WB:1:500-1:2000 ELISA:Recommended starting concentration is 1 Mu g/mL. Please optimize the concentration based on your specific assay requirements.
Formulation	PBS with 0.01% Thimerosal, 50% Glycerol, pH 7.3.
Isotype	IgG
Storage Instruction	Store at -20°C for up to 1 year from the date of receipt, and avoid repeat freeze-thaw cycles.

TARGET INFORMATION

Gene ID	9194
Gene Symbol	SLC16A7
Uniprot ID	MOT2_HUMAN
Immunogen	
Immunogen Region	379-478
Specificity	A synthetic peptide corresponding to a sequence within amino acids 379-478 of human SLC16A7 (NP_001257551.1).
Immunogen Sequence	TIVECGPVLLGPPLAGKLVD LTGEYKMYMSCGAIIVAAS VWLLIGNAINYRLLAKERKE ENARQKTRESEPLSKSKHSE DVNVKVSNAQSVTSERETNI



This product is suitable for in-vitro studies under the RESEARCH USE ONLY [RUO] licence. This product must not be used as for diagnostic or other medical purposes.
St John's Laboratory Ltd, Knowledge Dock Business Centre, University Way, London, E16 2RD | Tel: 0208 223 3081