

Anti-SKP2 antibody (100-200) (STJ25542)

STJ25542

GENERAL INFORMATION

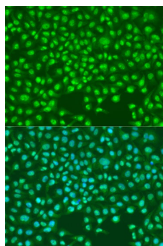
| | |
|--------------------------|--------------------|
| Product Type | Primary antibodies |
| Short Description | |
| Applications | WB/IF/ICC/ELISA |
| Host/Source | Rabbit |
| Reactivity | Human |

PRODUCT PROPERTIES

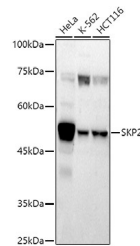
| | |
|-----------------------|--|
| Clonality | Polyclonal |
| Clone ID | |
| Concentration | Lot specific |
| Conjugation | Unconjugated |
| Purification | Affinity purification |
| Dilution Range | WB:1:100-1:500 IF/ICC:1:50-1:200 ELISA:Recommended starting concentration is 1 Mu g/mL. Please optimize the concentration based on your specific assay requirements. |
| Formulation | PBS with 0.05% Proclin300, 50% Glycerol, pH 7.3. |
| Isotype | IgG |
| Storage | Store at -20°C for up to 1 year from the date of receipt, and avoid repeat freeze-thaw cycles. |
| Instruction | |

TARGET INFORMATION

| | |
|---------------------------|--|
| Gene ID | 6502 |
| Gene Symbol | SKP2 |
| Uniprot ID | SKP2_HUMAN |
| Immunogen | |
| Immunogen Region | 100-200 |
| Specificity | Recombinant fusion protein containing a sequence corresponding to amino acids 100-200 of human SKP2 (NP_005974.2). |
| Immunogen Sequence | LPDELLLGIFSCCLCPPELLK VSGVCKRWYRLASDESLWQT LDLTGKNLHPDVTGRLLSQG VIAFRCPRSFMDQPLAEHFS PFRVQHMDLSNSVIEVSTLH G |



Immunofluorescence analysis of U2OS cells using SKP2 antibody (STJ25542) at dilution of 1:100. Blue: DAPI for nuclear staining.



Western blot analysis of extracts of various cell lines, using SKP2 antibody (STJ25542) at 1:500 dilution. Secondary antibody: HRP Goat Anti-Rabbit IgG (H+L) (STJS000856) at 1:10000 dilution. Lysates/proteins: 25 Mu g per lane. Blocking buffer: 3% nonfat dry milk in TBST. Detection: ECL Basic Kit. Exposure time: 180s.