

Anti-SHMT2 antibody (265-504) (STJ25526)

STJ25526

GENERAL INFORMATION

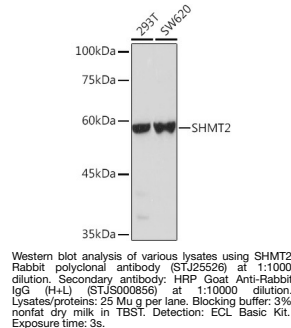
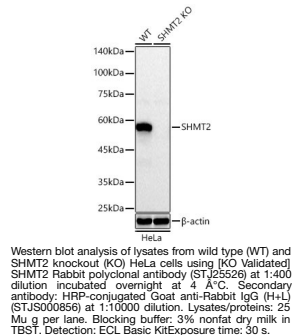
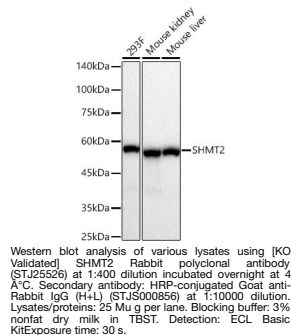
Product Type	Primary antibodies
Short Description	
Applications	WB/IHC-P/ELISA
Host/Source	Rabbit
Reactivity	Human/Mouse/Rat

PRODUCT PROPERTIES

Clonality	Polyclonal
Clone ID	
Concentration	Lot specific
Conjugation	Unconjugated
Purification	Affinity purification
Dilution	WB:1:500-1:2000
Range	IHC-P:1:50-1:200
	ELISA:Recommended starting concentration is 1 Mu g/mL. Please optimize the concentration based on your specific assay requirements.
Formulation	PBS with 0.09% Sodium Azide, 50% Glycerol, pH 7.3.
Isotype	IgG
Storage Instruction	Store at -20°C for up to 1 year from the date of receipt, and avoid repeat freeze-thaw cycles.

TARGET INFORMATION

Gene ID	6472
Gene Symbol	SHMT2
Uniprot ID	GLYM_HUMAN
Immunogen	
Immunogen Region	265-504
Specificity	Recombinant fusion protein containing a sequence corresponding to amino acids 265-504 of human SHMT2 (NP_005403.2).
Immunogen Sequence	PSPFKHADIVTTTHKTLRG ARSGLIFYRKGVKAVDPKTG REIPYTFEDRINFAVFPSTLQ GGPHNHAIAAVALKQACT PMFREYSLQVLKNARAMADA LLERGYSLVSGGTDNHLVLV DLRPKGLDGARAERVELVS ITANKNTCPGDRSAITPGGL RLGAPLTSRQFREDDFRRV VDFIDEGVNIGLEVSKTAK LQDFKSFLDKDSETSQRLAN LRQREVFARAFMPMPGFDE



This product is suitable for in-vitro studies under the RESEARCH USE ONLY [RUO] licence. This product must not be used as for diagnostic or other medical purposes.
St John's Laboratory Ltd, Knowledge Dock Business Centre, University Way, London, E16 2RD | Tel: 0208 223 3081