

Anti-KMT5A antibody (1-393 aa) (STJ25494)
STJ25494

GENERAL INFORMATION

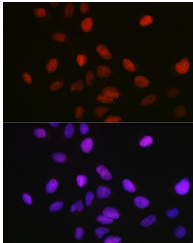
Product Type	Primary antibodies
Short Description	
Applications	WB/IF/ICC/ELISA
Host/Source	Rabbit
Reactivity	Human/Mouse/Rat

PRODUCT PROPERTIES

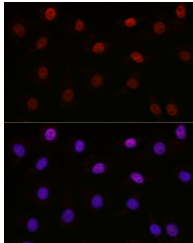
Clonality	Polyclonal
Clone ID	
Concentration	Lot specific
Conjugation	Unconjugated
Purification	Affinity purification
Dilution Range	WB: 1:500-1:1000 IF/ICC: 1:50-1:200 ELISA: Recommended starting concentration is 1 μ g/mL. Please optimize the concentration based on your specific assay requirements.
Formulation	PBS with 0.02% Sodium Azide, 50% Glycerol, pH 7.3.
Isotype	IgG
Storage Instruction	Store at -20°C for up to 1 year from the date of receipt, and avoid repeat freeze-thaw cycles.

TARGET INFORMATION

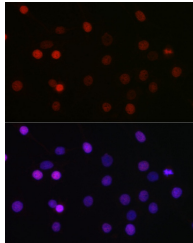
Gene ID	387893
Gene Symbol	KMT5A
Uniprot ID	KMT5A_HUMAN
Immunogen Region	1-393 aa
Specificity	Recombinant fusion protein containing a sequence corresponding to amino acids 1-393 of human KMT5A/KMT5A/SETD8 (Q9NQ1).
Immunogen Sequence	MGE GGG AAAALVAAAAAAAAAA AVAGQRRRLGRRARCH GPGRAAGGKMSKPCAVEAAA AAVAATAPGPEMVERRGPGR PRTDGENVFTGQSKIYSYMS PNKCSGMRFLQEENSVTHH EVKCQGKPLAGIYRKREEKR NAGNAVRSAMKSEEQIKDA RKGPLVPFPNQSEAAEPPK TPPSSCDSTNAIAKQALKK PIKGKQAPRKKAQGKTQQR KLTFYPVRRSSRSKAEL



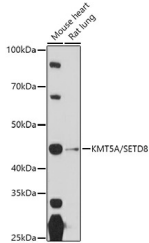
Immunofluorescence analysis of U-2 OS cells using KMT5A/KMT5A/SETD8 Rabbit polyclonal antibody (STJ25494) at dilution of 1:100 (40x lens). Blue: DAPI for nuclear staining.



Immunofluorescence analysis of NIH-3T3 cells using KMT5A/KMT5A/SETD8 Rabbit polyclonal antibody (STJ25494) at dilution of 1:100 (40x lens). Blue: DAPI for nuclear staining.



Immunofluorescence analysis of C6 cells using KMT5A/KMT5A/SETD8 Rabbit polyclonal antibody (STJ25494) at dilution of 1:100 (40x lens). Blue: DAPI for nuclear staining.



Western blot analysis of extracts of various cell lines, using (STJ25494) at 1:1000 dilution. Secondary antibody: HRP Goat Anti-Rabbit IgG (H+L) (STJS000856) at 1:10000 dilution. Lysates/proteins: 25 μ g per lane. Blocking buffer: 3% nonfat dry milk in TBST. Detection: ECL Basic Kit. Exposure time: 90s.

This product is suitable for in-vitro studies under the RESEARCH USE ONLY [RUO] licence. This product must not be used as for diagnostic or other medical purposes.
St John's Laboratory Ltd, Knowledge Dock Business Centre, University Way, London, E16 2RD | Tel: 0208 223 3081