

Anti-SDC2 antibody (19-144) (STJ25458)

STJ25458

GENERAL INFORMATION

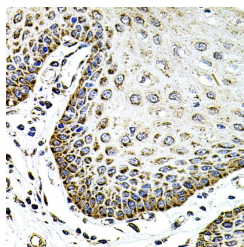
| | |
|--------------------------|--------------------|
| Product Type | Primary antibodies |
| Short Description | |
| Applications | WB/IHC-P/ELISA |
| Host/Source | Rabbit |
| Reactivity | Human/Mouse/Rat |

PRODUCT PROPERTIES

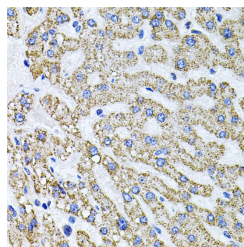
| | |
|----------------------------|--|
| Clonality | Polyclonal |
| Clone ID | |
| Concentration | Lot specific |
| Conjugation | Unconjugated |
| Purification | Affinity purification |
| Dilution Range | WB:1:500-1:2000 IHC-P:1:50-1:200 ELISA:Recommended starting concentration is 1 Mu g/mL. Please optimize the concentration based on your specific assay requirements. |
| Formulation | PBS with 0.02% Sodium Azide, 50% Glycerol, pH 7.3. |
| Isotype | IgG |
| Storage Instruction | Store at -20°C for up to 1 year from the date of receipt, and avoid repeat freeze-thaw cycles. |

TARGET INFORMATION

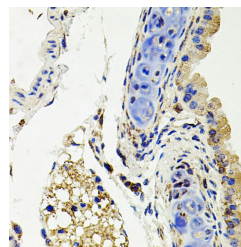
| | |
|---------------------------|--|
| Gene ID | 6383 |
| Gene Symbol | SDC2 |
| Uniprot ID | SDC2_HUMAN |
| Immunogen | |
| Immunogen Region | 19-144 |
| Specificity | Recombinant fusion protein containing a sequence corresponding to amino acids 19-144 of human SDC2 (NP_002989.2). |
| Immunogen Sequence | ESRAELTSDKDMYLDNSSIE EASGVYPIDDDYASASGSG ADEDVESPELTTSRPLPKIL LTSAAPKVETTTLNIQNKIP AQTKSPEETDKEKVHLSDE RKMDPAEEDTNVYTEKHSDS LFKRTE |



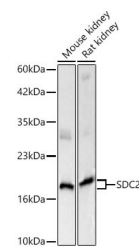
Immunohistochemistry analysis of SDC2 in paraffin-embedded human esophagus using SDC2 Rabbit polyclonal antibody (STJ25458) at dilution of 1:100 (40x lens). Perform microwave antigen retrieval with 10 mM PBS buffer pH 7.2 before commencing with immunohistochemistry staining protocol.



Immunohistochemistry analysis of SDC2 in paraffin-embedded human liver tissue using SDC2 Rabbit polyclonal antibody (STJ25458) at dilution of 1:100 (40x lens). Perform microwave antigen retrieval with 10 mM PBS buffer pH 7.2 before commencing with immunohistochemistry staining protocol.



Immunohistochemistry analysis of SDC2 in paraffin-embedded mouse lung using SDC2 Rabbit polyclonal antibody (STJ25458) at dilution of 1:100 (40x lens). Perform microwave antigen retrieval with 10 mM PBS buffer pH 7.2 before commencing with immunohistochemistry staining protocol.



Western blot analysis of various lysates using SDC2 Rabbit polyclonal antibody (STJ25458) at 1:1000 dilution. Secondary antibody: HRP Goat Anti-Rabbit IgG (H+L) (STJS000856) at 1:10000 dilution. Lysates/proteins: 25 Mu g per lane. Blocking buffer: 3 % nonfat dry milk in TBST. Detection: ECL Basic Kit. Exposure time: 5 s.

This product is suitable for in-vitro studies under the RESEARCH USE ONLY [RUO] licence. This product must not be used as for diagnostic or other medical purposes.
St John's Laboratory Ltd, Knowledge Dock Business Centre, University Way, London, E16 2RD | Tel: 0208 223 3081