

Anti-RUNX1 antibody (171-260) (STJ25422)
STJ25422

GENERAL INFORMATION

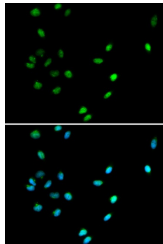
Product Type	Primary antibodies
Short Description	
Applications	WB/IHC-P/IF/ICC/ELISA
Host/Source	Rabbit
Reactivity	Human/Mouse/Rat

PRODUCT PROPERTIES

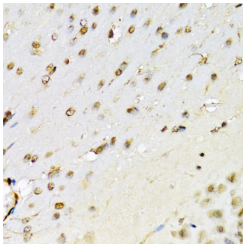
Clonality	Polyclonal
Clone ID	
Concentration	Lot specific
Conjugation	Unconjugated
Purification	Affinity purification
Dilution Range	WB:1:500-1:700 IHC-P:1:50-1:100 IF/ICC:1:50-1:100 ELISA:Recommended starting concentration is 1 Mu g/mL. Please optimize the concentration based on your specific assay requirements.
Formulation	PBS with 0.05% Proclin300, 50% Glycerol, pH 7.3.
Isotype	IgG
Storage Instruction	Store at-20°C for up to 1 year from the date of receipt, and avoid repeat freeze-thaw cycles.

TARGET INFORMATION

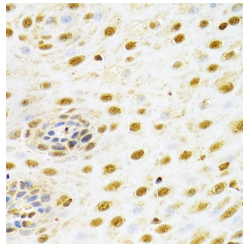
Gene ID	861
Gene Symbol	RUNX1
Uniprot ID	RUNX1_HUMAN
Immunogen	
Immunogen Region	171-260
Specificity	A synthetic peptide corresponding to a sequence within amino acids 171-260 of human RUNX1 (NP_001001890.1).
Immunogen Sequence	DGPREPRHRQKLDQTKPG SLFSERLSELEQLRRTAMR VSPHHPAPTPNPRASLNHST AFNPQPQSQMQDTRQIQPSP PWSYDQSYQY



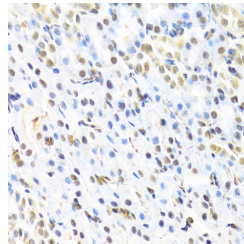
Immunofluorescence analysis of A549 cells using RUNX1 antibody (STJ25422). Blue: DAPI for nuclear staining.



Immunohistochemistry analysis of paraffin-embedded mouse brain using RUNX1 Antibody (STJ25422) at dilution of 1:100 (40x lens). Perform microwave antigen retrieval with 10 mM PBS buffer pH 7. 2 before commencing with immunohistochemistry staining protocol.



Immunohistochemistry analysis of paraffin-embedded human esophageal cancer using RUNX1 Antibody (STJ25422) at dilution of 1:100 (40x lens). Perform microwave antigen retrieval with 10 mM PBS buffer pH 7. 2 before commencing with immunohistochemistry staining protocol.



Immunohistochemistry analysis of paraffin-embedded rat kidney using RUNX1 Antibody (STJ25422) at dilution of 1:100 (40x lens). Perform microwave antigen retrieval with 10 mM PBS buffer pH 7. 2 before commencing with immunohistochemistry staining protocol.

This product is suitable for in-vitro studies under the RESEARCH USE ONLY [RUO] licence. This product must not be used as for diagnostic or other medical purposes.
St John's Laboratory Ltd, Knowledge Dock Business Centre, University Way, London, E16 2RD | Tel: 0208 223 3081