

Anti-RPS3 antibody (1-243) (STJ25407)

STJ25407

GENERAL INFORMATION

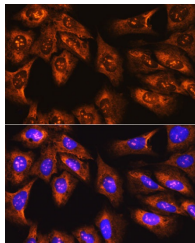
Product Type	Primary antibodies
Short Description	
Applications	WB/IHC-P/IF/ICC/ELISA
Host/Source	Rabbit
Reactivity	Human/Mouse/Rat

PRODUCT PROPERTIES

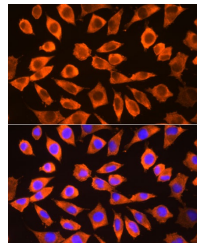
Clonality	Polyclonal
Clone ID	
Concentration	Lot specific
Conjugation	Unconjugated
Purification	Affinity purification
Dilution	WB:1:500-1:1000
Range	IHC-P:1:50-1:200 IF/ICC:1:50-1:200 ELISA:Recommended starting concentration is 1 µg/mL. Please optimize the concentration based on your specific assay requirements.
Formulation	PBS with 0.02% Sodium Azide, 50% Glycerol, pH 7.3.
Isotype	IgG
Storage	Store at -20°C for up to 1 year from the date of receipt, and avoid repeat freeze-thaw cycles.
Instruction	

TARGET INFORMATION

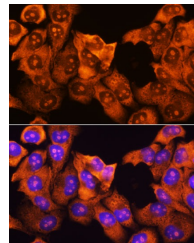
Gene ID	6188
Gene Symbol	RPS3
Uniprot ID	RS3_HUMAN
Immunogen	
Region	1-243
Specificity	Recombinant fusion protein containing a sequence corresponding to amino acids 1-243 of human RPS3 (NP_000996.2).
Immunogen Sequence	MAVQISKKRKFVADGIFKAE LNEFLTRELAEDGYSGVEVR VTPTRTEIIILATRTQNVLG EKGRRIRELTAVVQKRFGFP EGSVELYAEKVATRG LCAIA QAESLRYKLLGGLAVRRACY GVLRFIMESGAKGCEVWVSG KLRGQRAKSMKFVDGLMIHS GDPVNNYYVDTA VRHVLLRQG VLGIKVKIMLPWDPTGKIGP KKPLPDHVSIVEPKDEILPT TPISQKGGKPEPPAMPQP



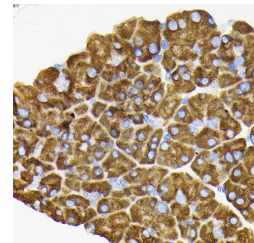
Immunofluorescence analysis of U-2 OS cells using RPS3 Rabbit polyclonal antibody (STJ25407) at dilution of 1:100. Secondary antibody: Cy3 Goat Anti-Rabbit IgG (H+L) at 1:500 dilution. Blue: DAPI for nuclear staining.



Immunofluorescence analysis of L929 cells using RPS3 Rabbit polyclonal antibody (STJ25407) at dilution of 1:100. Secondary antibody: Cy3 Goat Anti-Rabbit IgG (H+L) at 1:500 dilution. Blue: DAPI for nuclear staining.



Immunofluorescence analysis of HeLa cells using RPS3 Rabbit polyclonal antibody (STJ25407) at dilution of 1:100. Secondary antibody: Cy3 Goat Anti-Rabbit IgG (H+L) at 1:500 dilution. Blue: DAPI for nuclear staining.



Immunohistochemistry analysis of RPS3 in paraffin-embedded mouse pancreas using RPS3 Rabbit polyclonal antibody (STJ25407) at dilution of 1:100 (40x lens). Perform microwave antigen retrieval with 10 mM Tris/EDTA buffer pH 9.0 before commencing with immunohistochemistry staining protocol.

This product is suitable for in-vitro studies under the RESEARCH USE ONLY [RUO] licence. This product must not be used as for diagnostic or other medical purposes.
St John's Laboratory Ltd, Knowledge Dock Business Centre, University Way, London, E16 2RD | Tel: 0208 223 3081