

Anti-RHOC antibody (1-193) (STJ25354)

STJ25354

GENERAL INFORMATION

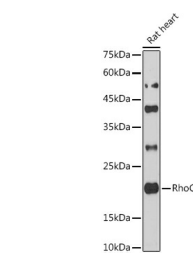
Product Type	Primary antibodies
Short Description	
Applications	WB/ELISA
Host/Source	Rabbit
Reactivity	Human/Rat

PRODUCT PROPERTIES

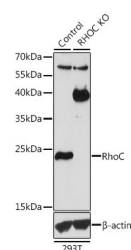
Clonality	Polyclonal
Clone ID	
Concentration	Lot specific
Conjugation	Unconjugated
Purification	Affinity purification
Dilution	WB: 1:500-1:1000
Range	ELISA: Recommended starting concentration is 1 µg/mL. Please optimize the concentration based on your specific assay requirements.
Formulation	PBS with 0.02% Sodium Azide, 50% Glycerol, pH 7.3.
Isotype	IgG
Storage	Store at -20°C for up to 1 year from the date of receipt, and avoid repeat freeze-thaw cycles.
Instruction	

TARGET INFORMATION

Gene ID	389
Gene Symbol	RHOC
Uniprot ID	RHOC_HUMAN
Immunogen	
Immunogen Region	1-193
Specificity	Recombinant fusion protein containing a sequence corresponding to amino acids 1-193 of human RhoC (NP_786886.1).
Immunogen Sequence	MAAIRKKLVIVGDGACGKTC LLIVFSKQDFEVYVPTVFE NYIADIEVDGKQVELALWDT AGQEDYDRLRPLSYPTDVI LMCFSIDSPDSLENIPEKWT PEVKHFCPNVPIILVGNKKD LRQDEHTRRELAKMKQEPVR SEEGRDMANRISAFGYLECS AKTKEGVREVFEMATRLGLQ VRKNKRRRGCPIL



Western blot analysis of extracts of Rat heart cells, using RhoC antibody (STJ25354) at 1:1000 dilution. Secondary antibody: HRP Goat Anti-Rabbit IgG (H+L) (STJS000856) at 1:10000 dilution. Lysates/proteins: 25 µg per lane. Blocking buffer: 3% nonfat dry milk in TBST. Detection: ECL Basic Kit. Exposure time: 90s.



Western blot analysis of extracts from normal (control) and RhoC knockout (KO) 293T cells, using RhoC antibody (STJ25354) at 1:1000 dilution. Secondary antibody: HRP Goat Anti-Rabbit IgG (H+L) (STJS000856) at 1:10000 dilution. Lysates/proteins: 25 µg per lane. Blocking buffer: 3% nonfat dry milk in TBST. Detection: ECL Basic Kit. Exposure time: 300s.

This product is suitable for in-vitro studies under the RESEARCH USE ONLY [RUO] licence. This product must not be used as for diagnostic or other medical purposes.
St John's Laboratory Ltd, Knowledge Dock Business Centre, University Way, London, E16 2RD | Tel: 0208 223 3081