

Anti-RGS16 antibody (1-202) (STJ25346)

STJ25346

GENERAL INFORMATION

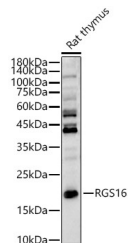
Product Type	Primary antibodies
Short Description	
Applications	WB/IHC-P/ELISA
Host/Source	Rabbit
Reactivity	Human/Mouse/Rat

PRODUCT PROPERTIES

Clonality	Polyclonal
Clone ID	
Concentration	Lot specific
Conjugation	Unconjugated
Purification	Affinity purification
Dilution	WB:1:200-1:2000
Range	IHC-P:1:50-1:200 ELISA:Recommended starting concentration is 1 µg/mL. Please optimize the concentration based on your specific assay requirements.
Formulation	PBS with 0.02% Sodium Azide, 50% Glycerol, pH 7.3.
Isotype	IgG
Storage Instruction	Store at -20°C for up to 1 year from the date of receipt, and avoid repeat freeze-thaw cycles.

TARGET INFORMATION

Gene ID	6004
Gene Symbol	RGS16
Uniprot ID	RGS16_HUMAN
Immunogen	
Immunogen Region	1-202
Specificity	Recombinant fusion protein containing a sequence corresponding to amino acids 1-202 of human RGS16 (NP_002919.3).
Immunogen Sequence	MCRTLAAFPPTCLERAKEFK TRLGIFLHKSELGCDTGSTG KFEWGSKHSKENRNFSVDL GWRESFDLLSSKNGVAAFH AFLKTEFSEENLEFWLACEE FKKIRSATKLASRAHQIFEE FICSEAPKEVNIDHETHLT RMNLQTATATCFDAAQGGKTR TLMEKDSYPRFLKSPAYRDL AAQASAASATLSSCSLDEPS HT



Western blot analysis of Rat thymus, using RGS16 Rabbit polyclonal antibody (STJ25346) at 1:1000 dilution. Secondary antibody: HRP Goat Anti-Rabbit IgG (H+L) (STJ5000856) at 1:10000 dilution. Lysates/proteins: 25µg per lane. Blocking buffer: 3% nonfat dry milk in TBST. Detection: ECL Basic Kit. Exposure time: 30s.

This product is suitable for in-vitro studies under the RESEARCH USE ONLY [RUO] licence. This product must not be used as for diagnostic or other medical purposes.

St John's Laboratory Ltd, Knowledge Dock Business Centre, University Way, London, E16 2RD | Tel: 0208 223 3081