

Anti-REN antibody (250-406) (STJ25336)

STJ25336

GENERAL INFORMATION

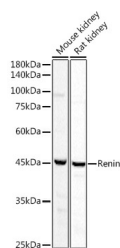
Product Type	Primary antibodies
Short Description	
Applications	WB/IHC-P/ELISA
Host/Source	Rabbit
Reactivity	Human/Mouse/Rat

PRODUCT PROPERTIES

Clonality	Polyclonal
Clone ID	
Concentration	Lot specific
Conjugation	Unconjugated
Purification	Affinity purification
Dilution	WB:1:500-1:1000
Range	IHC-P:1:100-1:200 ELISA:Recommended starting concentration is 1 Mu g/mL. Please optimize the concentration based on your specific assay requirements.
Formulation	PBS with 0.02% Sodium Azide, 50% Glycerol, pH 7.3.
Isotype	IgG
Storage Instruction	Store at -20°C for up to 1 year from the date of receipt, and avoid repeat freeze-thaw cycles.

TARGET INFORMATION

Gene ID	5972
Gene Symbol	REN
Uniprot ID	REN1_HUMAN
Immunogen	
Immunogen Region	250-406
Specificity	Recombinant fusion protein containing a sequence corresponding to amino acids 250-406 of human Renin (NP_000528.1).
Immunogen Sequence	QHYEGNFHYINLIKTVGWQI QMKGVS VGSSTLLCEDGCLA LVDTGASYISGSTSSIEKLM EALGAKKRLFDYVVKCNEGP TLPDISFHLGGKEYLTLSAD YVFQESYSSKKLCTLAHAM DIPPTGPTWALGATFIRKF YTEFDRRNNRIGFALAR



Western blot analysis of extracts of various cell lines, using Renin antibody (STJ25336) at 1:1000 dilution. Secondary antibody: HRP Goat Anti-Rabbit IgG (H+L) (STJS000856) at 1:10000 dilution. Lysates/proteins: 25 Mu g per lane. Blocking buffer: 3% nonfat dry milk in TBST. Detection: ECL Basic Kit. Exposure time: 10s.

This product is suitable for in-vitro studies under the RESEARCH USE ONLY [RUO] licence. This product must not be used as for diagnostic or other medical purposes.
St John's Laboratory Ltd, Knowledge Dock Business Centre, University Way, London, E16 2RD | Tel: 0208 223 3081