

Anti-RELA antibody (450-551) (STJ25333)
STJ25333

GENERAL INFORMATION

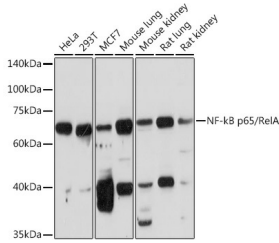
Product Type	Primary antibodies
Short Description	
Applications	WB/IHC-P/IF/ICC/ELISA
Host/Source	Rabbit
Reactivity	Human/Mouse/Rat

PRODUCT PROPERTIES

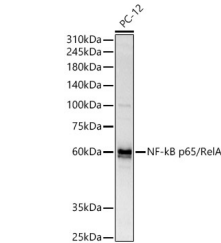
Clonality	Polyclonal
Clone ID	
Concentration	Lot specific
Conjugation	Unconjugated
Purification	Affinity purification
Dilution Range	WB:1:500-1:2000 IHC-P:1:100-1:500 IF/ICC:1:50-1:200 ELISA:Recommended starting concentration is 1 Mu g/mL. Please optimize the concentration based on your specific assay requirements.
Formulation	PBS with 0.09% Sodium Azide, 50% Glycerol, pH 7.3.
Isotype	IgG
Storage Instruction	Store at -20°C for up to 1 year from the date of receipt, and avoid repeat freeze-thaw cycles.

TARGET INFORMATION

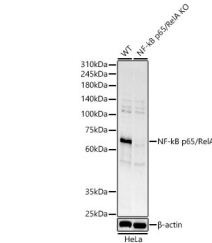
Gene ID	5970
Gene Symbol	RELA
Uniprot ID	TF65_HUMAN
Immunogen	
Immunogen	450-551
Region	
Specificity	Recombinant fusion protein containing a sequence corresponding to amino acids 450-550 of human NF-kB p65/RelA (NP_068810.3).
Immunogen	LGALLGNSTDPVFTDLASV DNSEFQQLLNQIGIPVPHTT EPMLMEYPEAIRLVTGAQR PPDPAAPLGGAPGLPNGLLS
Sequence	GDEDFSSIADMDFSALLSQI S



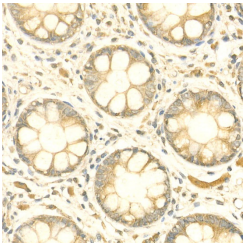
Western blot analysis of extracts of various cell lines, using NF-kB p65/RelA rabbit polyclonal antibody (STJ25333) at 1:1000 dilution. Secondary antibody: HRP Goat Anti-rabbit IgG (H+L) (STJ5000856) at 1:10000 dilution. Lysates/proteins: 25 Mu g per lane. Blocking buffer: 3% non-fat dry milk in TBST. Detection: ECL Basic Kit. Exposure time: 180s.



Western blot analysis of various lysates, using NF-kB p65/RelA antibody (STJ25333) at 1:2000 dilution. Secondary antibody: HRP Goat Anti-rabbit IgG (H+L) (STJ5000856) at 1:10000 dilution. Lysates/proteins: 25 Mu g per lane. Blocking buffer: 3% non-fat dry milk in TBST. Detection: ECL Basic Kit. Exposure time: 20s.



Western blot analysis of extracts from wild type (WT) and NF-kB p65/RelA knockout (KO) HeLa (KO) cells, using NF-kB p65/RelA antibody (STJ25333) at 1:2000 dilution. Secondary antibody: HRP Goat Anti-rabbit IgG (H+L) (STJ5000856) at 1:10000 dilution. Lysates/proteins: 25 Mu g per lane. Blocking buffer: 3% non-fat dry milk in TBST. Detection: ECL Basic Kit. Exposure time: 20s.



Immunohistochemistry analysis of paraffin-embedded human colon using [KO Validated] NF-kB p65/RelA rabbit polyclonal antibody (STJ25333) at dilution of 1:200 (40x lens). Perform high pressure antigen retrieval with 10 mM citrate buffer pH 6.0 before commencing with immunohistochemistry staining protocol.

This product is suitable for in-vitro studies under the RESEARCH USE ONLY [RUO] licence. This product must not be used as for diagnostic or other medical purposes.
St John's Laboratory Ltd, Knowledge Dock Business Centre, University Way, London, E16 2RD | Tel: 0208 223 3081