

Anti-RAP1A antibody (39-138) (STJ25296)
STJ25296

GENERAL INFORMATION

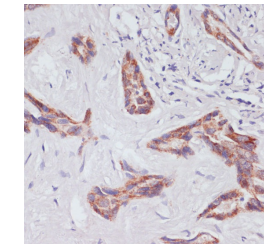
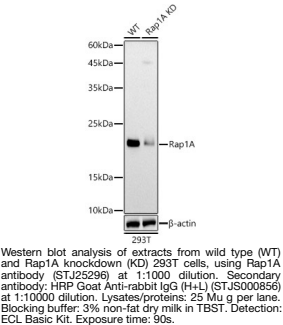
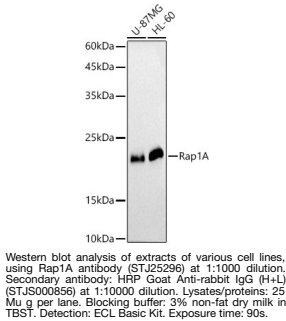
Product Type	Primary antibodies
Short Description	
Applications	WB/IHC-P/ELISA
Host/Source	Rabbit
Reactivity	Human/Mouse/Rat

PRODUCT PROPERTIES

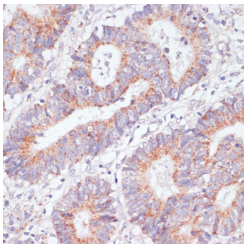
Clonality	Polyclonal
Clone ID	
Concentration	Lot specific
Conjugation	Unconjugated
Purification	Affinity purification
Dilution Range	WB:1:500-1:1000 IHC-P:1:50-1:100 ELISA:Recommended starting concentration is 1 Mu g/mL. Please optimize the concentration based on your specific assay requirements.
Formulation	PBS with 0.09% Sodium Azide, 50% Glycerol, pH 7.3.
Isotype	IgG
Storage	Store at -20°C for up to 1 year from the date of receipt, and avoid repeat freeze-thaw cycles.
Instruction	

TARGET INFORMATION

Gene ID	5906
Gene Symbol	RAP1A
Uniprot ID	RAP1A_HUMAN
Immunogen	
Immunogen Region	39-138
Specificity	A synthetic peptide corresponding to a sequence within amino acids 39-138 of human Rap1A (NP_002875.1). SYRKQVEVDCQQCMLEILD AGTEQFTAMRDLYMKNGQGF ALVYSITAQSTFNDLQDLRE QILRVKDTEDVPMILVGNKC
Immunogen Sequence	DLEDERVVGKEQQNLARQW



Immunohistochemistry analysis of paraffin-embedded human liver cancer using Rap1A antibody (STJ25296) at dilution of 1:100 (40x lens). Perform microwave antigen retrieval with 10 mM PBS buffer pH 7. 2 before commencing with immunohistochemistry staining protocol.



Immunohistochemistry analysis of paraffin-embedded human colon carcinoma using Rap1A antibody (STJ25296) at dilution of 1:100 (40x lens). Perform microwave antigen retrieval with 10 mM PBS buffer pH 7. 2 before commencing with immunohistochemistry staining protocol.

This product is suitable for in-vitro studies under the RESEARCH USE ONLY [RUO] licence. This product must not be used as for diagnostic or other medical purposes.
St John's Laboratory Ltd, Knowledge Dock Business Centre, University Way, London, E16 2RD | Tel: 0208 223 3081