

Anti-RAB7A antibody (100-207) (STJ25267)

STJ25267

GENERAL INFORMATION

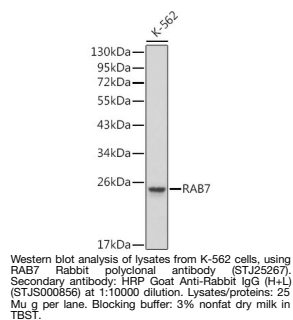
Product Type	Primary antibodies
Short Description	
Applications	WB/ELISA
Host/Source	Rabbit
Reactivity	Human/Mouse/Rat

PRODUCT PROPERTIES

Clonality	Polyclonal
Clone ID	
Concentration	Lot specific
Conjugation	Unconjugated
Purification	Affinity purification
Dilution Range	WB:1:500-1:2000 ELISA:Recommended starting concentration is 1 Mu g/mL. Please optimize the concentration based on your specific assay requirements.
Formulation	PBS with 0.01% Thimerosal, 50% Glycerol, pH 7.3.
Isotype	IgG
Storage	Store at -20°C for up to 1 year from the date of receipt, and avoid repeat freeze-thaw cycles.
Instruction	

TARGET INFORMATION

Gene ID	7879
Gene Symbol	RAB7A
Uniprot ID	RAB7A_HUMAN
Immunogen	
Immunogen Region	100-207
Specificity	A synthetic peptide corresponding to a sequence within amino acids 100-207 of human RAB7 (NP_004628.4).
Immunogen Sequence	DSWRDEFLIQASPRDPENFP FVVLGNKIDLENRQVATKRA QAWCYSKNNIPYFETSAKEA INVEQAFQTIARNALKQETE VELYNEFFPEPIKLDKNDRAK ASAESCS



This product is suitable for in-vitro studies under the RESEARCH USE ONLY [RUO] licence. This product must not be used as for diagnostic or other medical purposes.
St John's Laboratory Ltd, Knowledge Dock Business Centre, University Way, London, E16 2RD | Tel: 0208 223 3081