

Anti-PTPRC antibody (611-1306) (STJ25232)

STJ25232

GENERAL INFORMATION

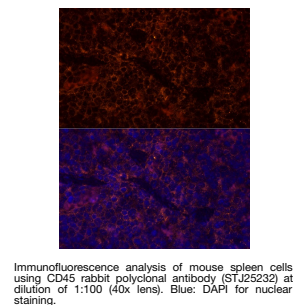
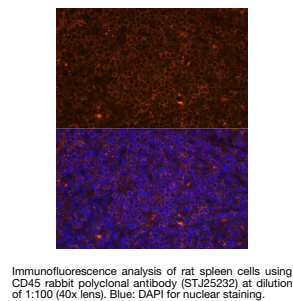
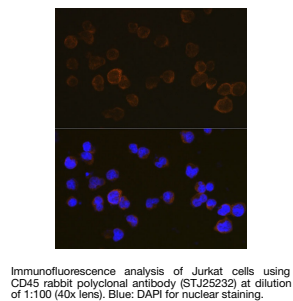
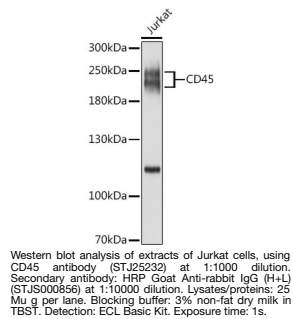
| | |
|--------------------------|--------------------|
| Product Type | Primary antibodies |
| Short Description | |
| Applications | WB/IF/ICC/IP/ELISA |
| Host/Source | Rabbit |
| Reactivity | Human/Mouse/Rat |

PRODUCT PROPERTIES

| | |
|-----------------------|---|
| Clonality | Polyclonal |
| Clone ID | |
| Concentration | Lot specific |
| Conjugation | Unconjugated |
| Purification | Affinity purification |
| Dilution Range | WB:1:500-1:1000 IF/ICC:1:50-1:200 IP:0.5 Mu g-4 Mu g antibody for 200 Mu g-400 Mu g extracts of whole cells ELISA:Recommended starting concentration is 1 Mu g/mL. Please optimize the concentration based on your specific assay requirements |
| Formulation | PBS with 0.09% Sodium Azide, 50% Glycerol, pH 7.3. |
| Isotype | IgG |
| Storage | Store at -20°C for up to 1 year from the date of receipt, and avoid repeat freeze-thaw cycles. |
| Instruction | |

TARGET INFORMATION

| | |
|---------------------------|--|
| Gene ID | 5788 |
| Gene Symbol | PTPRC |
| Uniprot ID | PTPRC_HUMAN |
| Immunogen | |
| Immunogen Region | 611-1306 |
| Specificity | Recombinant fusion protein containing a sequence corresponding to amino acids 611-730 of human CD45 (NP_002829.3). |
| Immunogen Sequence | NLDEQQLVERDDEKQLMNV EPIHADILLETYKRIADG RLFLAEFQSIPIRVFSKFKPIK EARKPFNQKNRYVDILPYD YNRVLSSEINGDAGSNYINA SYIDGFKEPRKYIAAQGPRD |



This product is suitable for in-vitro studies under the RESEARCH USE ONLY [RUO] licence. This product must not be used as for diagnostic or other medical purposes.
St John's Laboratory Ltd, Knowledge Dock Business Centre, University Way, London, E16 2RD | Tel: 0208 223 3081