

Anti-PTPN23 antibody (1230-1450) (STJ25227)

STJ25227

GENERAL INFORMATION

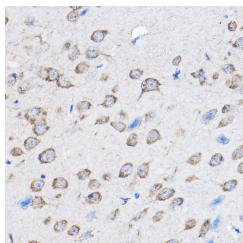
Product Type	Primary antibodies
Short Description	
Applications	WB/IHC-P/ELISA
Host/Source	Rabbit
Reactivity	Mouse/Rat

PRODUCT PROPERTIES

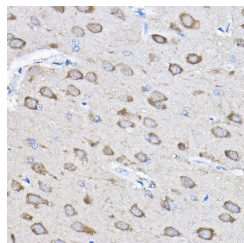
Clonality	Polyclonal
Clone ID	
Concentration	Lot specific
Conjugation	Unconjugated
Purification	Affinity purification
Dilution	WB:1:500-1:2000
Range	IHC-P:1:50-1:200
	ELISA:Recommended starting concentration is 1 μ g/mL. Please optimize the concentration based on your specific assay requirements.
Formulation	PBS with 0.02% Sodium Azide, 50% Glycerol, pH 7.3.
Isotype	IgG
Storage Instruction	Store at -20°C for up to 1 year from the date of receipt, and avoid repeat freeze-thaw cycles.

TARGET INFORMATION

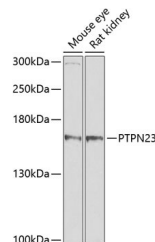
Gene ID	25930
Gene Symbol	PTPN23
Uniprot ID	PTN23_HUMAN
Immunogen	
Immunogen Region	1230-1450
Specificity	Recombinant fusion protein containing a sequence corresponding to amino acids 1230-1450 of human PTPN23 (NP_056281.1).
Immunogen Sequence	DSNRVLRSGKDDYINASCV EGLSPYCPPLVATQAPLPGT AADFVLMVHEQKVSIVMLV SEAEMEKQKVARYFPTERGQ PMVHGALSLALSSVRSTETH VERVLSLQFRDQSLKRLVH LHFPTWPELGLPDSPSNLLR FIQEVHAHYLHQRPLHTPII VHCSSGVGRTGAFALLYAAV QEVEAGNGIPELPQLVRRMR QQRKHLMLQEKLHLRFCYEAV V



Immunohistochemistry analysis of paraffin-embedded mouse brain using PTPN23 Rabbit polyclonal antibody (STJ25227) at dilution of 1:100 (40x lens). Perform high pressure antigen retrieval with 10 mM citrate buffer pH 6.0 before commencing with immunohistochemistry staining protocol.



Immunohistochemistry analysis of paraffin-embedded rat brain using PTPN23 Rabbit polyclonal antibody (STJ25227) at dilution of 1:100 (40x lens). Perform high pressure antigen retrieval with 10 mM citrate buffer pH 6.0 before commencing with immunohistochemistry staining protocol.



Western blot analysis of extracts of various cell lines, using PTPN23 antibody (STJ25227) at 1:1000 dilution. Secondary antibody: HRP Goat Anti-Rabbit IgG (H+L) (STJ5000856) at 1:10000 dilution. Lysates/proteins: 25 μ g per lane. Blocking buffer: 3% nonfat dry milk in TBST. Detection: ECL Basic Kit. Exposure time: 5s.

This product is suitable for in-vitro studies under the RESEARCH USE ONLY [RUO] licence. This product must not be used as for diagnostic or other medical purposes.

St John's Laboratory Ltd, Knowledge Dock Business Centre, University Way, London, E16 2RD | Tel: 0208 223 3081