

Anti-PTPN11 antibody (514-593) (STJ25224)
STJ25224

GENERAL INFORMATION

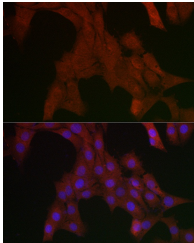
| | |
|--------------------------|-----------------------|
| Product Type | Primary antibodies |
| Short Description | |
| Applications | WB/IHC-P/IF/ICC/ELISA |
| Host/Source | Rabbit |
| Reactivity | Human/Mouse/Rat |

PRODUCT PROPERTIES

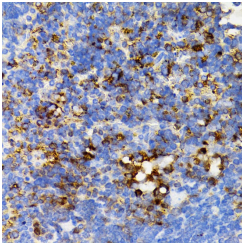
| | |
|----------------------------|---|
| Clonality | Polyclonal |
| Clone ID | |
| Concentration | Lot specific |
| Conjugation | Unconjugated |
| Purification | Affinity purification |
| Dilution Range | WB:1:1000-1:5000 IHC-P:1:50-1:100 IF/ICC:1:50-1:200 ELISA:Recommended starting concentration is 1 μ g/mL. Please optimize the concentration based on your specific assay requirements. |
| Formulation | PBS with 0.02% Sodium Azide, 50% Glycerol, pH 7.3. |
| Isotype | IgG |
| Storage Instruction | Store at -20°C for up to 1 year from the date of receipt, and avoid repeat freeze-thaw cycles. |

TARGET INFORMATION

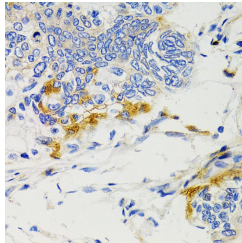
| | |
|---------------------------|--|
| Gene ID | 5781 |
| Gene Symbol | PTPN11 |
| Uniprot ID | PTN11_HUMAN |
| Immunogen | |
| Immunogen Region | 514-593 |
| Specificity | Recombinant fusion protein containing a sequence corresponding to amino acids 514-593 of human SHP2 (NP_002825.3). |
| Immunogen Sequence | IYMAVQHYIETLQRRIEEEQ KSKRKGHEYTNIKYSLADQT SGDQSPLPCTPTPPCAEMR EDSARVYENVGLMQQKKSFR |



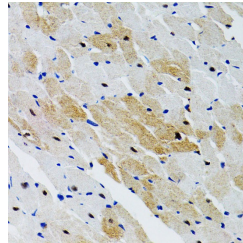
Immunofluorescence analysis of PC-12 cells using SHP2 Rabbit polyclonal antibody (STJ25224) at dilution of 1:200 (40x lens). Blue: DAPI for nuclear staining.



Immunohistochemistry analysis of paraffin-embedded mouse spleen using SHP2 antibody (STJ25224) at dilution of 1:100 (40x lens). Perform microwave antigen retrieval with 10 mM PBS buffer pH 7.2 before commencing with immunohistochemistry staining protocol.



Immunohistochemistry analysis of paraffin-embedded human gastric cancer using SHP2 antibody (STJ25224) at dilution of 1:100 (40x lens). Perform microwave antigen retrieval with 10 mM PBS buffer pH 7.2 before commencing with immunohistochemistry staining protocol.



Immunohistochemistry analysis of paraffin-embedded rat heart using SHP2 antibody (STJ25224) at dilution of 1:100 (40x lens). Perform microwave antigen retrieval with 10 mM PBS buffer pH 7.2 before commencing with immunohistochemistry staining protocol.