

Anti-PSEN1 antibody (290-380) (STJ25167)

STJ25167

GENERAL INFORMATION

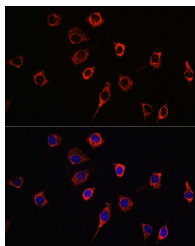
Product Type	Primary antibodies
Short Description	
Applications	WB/IHC-P/IF/ICC/ELISA
Host/Source	Rabbit
Reactivity	Human/Mouse/Rat

PRODUCT PROPERTIES

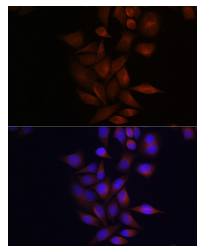
Clonality	Polyclonal
Clone ID	
Concentration	Lot specific
Conjugation	Unconjugated
Purification	Affinity purification
Dilution Range	WB:1:500-1:2000 IHC-P:1:50-1:200 IF/ICC:1:50-1:200 ELISA:Recommended starting concentration is 1 Mu g/mL. Please optimize the concentration based on your specific assay requirements.
Formulation	PBS with 0.09% Sodium Azide, 50% Glycerol, pH 7.3.
Isotype	IgG
Storage Instruction	Store at -20°C for up to 1 year from the date of receipt, and avoid repeat freeze-thaw cycles.

TARGET INFORMATION

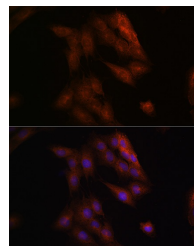
Gene ID	5663
Gene Symbol	PSEN1
Uniprot ID	PSN1_HUMAN
Immunogen	
Immunogen Region	290-380
Specificity	Recombinant fusion protein containing a sequence corresponding to amino acids 290-380 of human Presenilin 1 (NP_000012.1).
Immunogen Sequence	STMVWLNVNMAEGDPEAQRRV SKNSKYNAESTERESQDTVA ENDDGGFSEEWEAQRDShLG PHRSTPESRAAVQELSSSIL AGEDPEERGVK



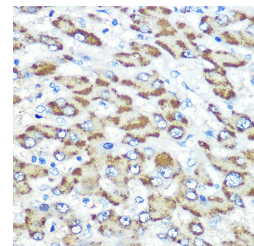
Immunofluorescence analysis of L929 cells using Presenilin 1 Rabbit polyclonal antibody (STJ25167) at dilution of 1:100 (40x lens). Blue: DAPI for nuclear staining.



Immunofluorescence analysis of HeLa cells using Presenilin 1 Rabbit polyclonal antibody (STJ25167) at dilution of 1:100 (40x lens). Blue: DAPI for nuclear staining.



Immunofluorescence analysis of C6 cells using Presenilin 1 Rabbit polyclonal antibody (STJ25167) at dilution of 1:100 (40x lens). Blue: DAPI for nuclear staining.



Immunohistochemistry analysis of paraffin-embedded human liver using Presenilin 1 Rabbit polyclonal antibody (STJ25167) at dilution of 1:100 (40x lens). Perform microwave antigen retrieval with 10 mM PBS buffer pH 7.2 before commencing with immunohistochemistry staining protocol.

This product is suitable for in-vitro studies under the RESEARCH USE ONLY [RUO] licence. This product must not be used as for diagnostic or other medical purposes.
St John's Laboratory Ltd, Knowledge Dock Business Centre, University Way, London, E16 2RD | Tel: 0208 223 3081