

Anti-PPP1CC antibody (1-323) (STJ25082)
STJ25082

GENERAL INFORMATION

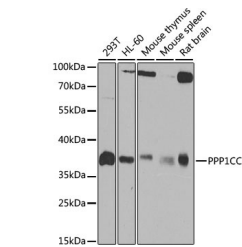
Product Type	Primary antibodies
Short Description	
Applications	WB/IF/ICC/ELISA
Host/Source	Rabbit
Reactivity	Human/Mouse/Rat

PRODUCT PROPERTIES

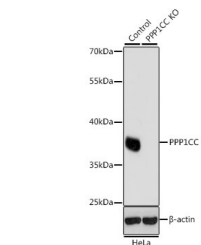
Clonality	Polyclonal
Clone ID	
Concentration	Lot specific
Conjugation	Unconjugated
Purification	Affinity purification
Dilution Range	WB:1:200-1:2000 IF/CC:1:50-1:200 ELISA:Recommended starting concentration is 1 Mu g/mL. Please optimize the concentration based on your specific assay requirements.
Formulation	PBS with 0.02% Sodium Azide, 50% Glycerol, pH 7.3.
Isotype	IgG
Storage Instruction	Store at -20°C for up to 1 year from the date of receipt, and avoid repeat freeze-thaw cycles.

TARGET INFORMATION

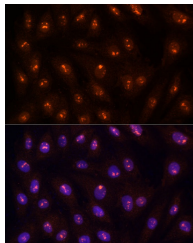
Gene ID	5501
Gene Symbol	PPP1CC
Uniprot ID	PP1G_HUMAN
Immunogen	
Immunogen Region	1-323
Specificity	Recombinant fusion protein containing a sequence corresponding to amino acids 1-323 of human PPP1CC (NP_002701.1).
Immunogen Sequence	MADLDKLNIDSIIQRLLEVR GSKPGKNVQLQENEIRGLCL KSREIFLSQPILLELEAPLK ICGDIHGQYYDLLRLFYGG FPESNYLFLGDYVDRGKQS LETICLLLAYKIKYPENFFL LRGNHECASINRIYGFYDEC KRRYNIKLWKTFDTCFNCLP IAAIVDEKIFCCHGGLSPDL QSMEQIRRMIRPTDVPDQGL LCDLLWSDPKDVLGWGEND RGVSTFTGAEVVAKFLHKH



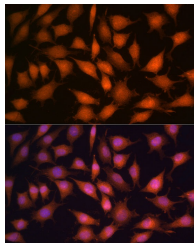
Western blot analysis of extracts of various cell lines, using PPP1CC antibody (STJ25082) at 1:1000 dilution. Secondary antibody: HRP Goat Anti-rabbit IgG (H+L) (STJ5000856) at 1:10000 dilution. Lysates/proteins: 25 Mu g per lane. Blocking buffer: 3% non-fat dry milk in TBST. Detection: ECL Basic Kit. Exposure time: 30s.



Western blot analysis of extracts from normal (control) and PPP1CC knockout (KO) HeLa cells, using PPP1CC antibody (STJ25082) at 1:1000 dilution. Secondary antibody: HRP Goat Anti-rabbit IgG (H+L) (STJ5000856) at 1:10000 dilution. Lysates/proteins: 25 Mu g per lane. Blocking buffer: 3% non-fat dry milk in TBST. Detection: ECL Basic Kit. Exposure time: 1s.



Immunofluorescence analysis of H9C2 cells using [KO Validated] PPP1CC rabbit polyclonal antibody (STJ25082) at dilution of 1:100 (40x lens). Blue: DAPI for nuclear staining.



Immunofluorescence analysis of L929 cells using [KO Validated] PPP1CC rabbit polyclonal antibody (STJ25082) at dilution of 1:100 (40x lens). Blue: DAPI for nuclear staining.

This product is suitable for in-vitro studies under the RESEARCH USE ONLY [RUO] licence. This product must not be used as for diagnostic or other medical purposes.
St John's Laboratory Ltd, Knowledge Dock Business Centre, University Way, London, E16 2RD | Tel: 0208 223 3081