

Anti-POT1 antibody (497-634) (STJ25058)

STJ25058

GENERAL INFORMATION

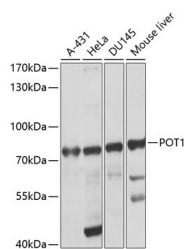
Product Type	Primary antibodies
Short Description	
Applications	WB/ELISA
Host/Source	Rabbit
Reactivity	Human/Mouse

PRODUCT PROPERTIES

Clonality	Polyclonal
Clone ID	
Concentration	Lot specific
Conjugation	Unconjugated
Purification	Affinity purification
Dilution	WB:1:200-1:2000
Range	ELISA:Recommended starting concentration is 1 µg/mL. Please optimize the concentration based on your specific assay requirements.
Formulation	PBS with 0.02% Sodium Azide, 50% Glycerol, pH 7.3.
Isotype	IgG
Storage	Store at -20°C for up to 1 year from the date of receipt, and avoid repeat freeze-thaw cycles.
Instruction	

TARGET INFORMATION

Gene ID	25913
Gene Symbol	POT1
Uniprot ID	POTE1_HUMAN
Immunogen	
Immunogen Region	497-634
Specificity	Recombinant fusion protein containing a sequence corresponding to amino acids 497-634 of human POT1 (NP_056265.2).
Immunogen Sequence	TIHHYGCCKCSSLRSIQNLN SLVDKTSWIPSSVAEALGIV PLQYVFVMTFTLDDGTGVLE AYLMDSKFFQIPASEVLMD DDLQKSVDMMMDMFCPPGIK IDAYPWLECFIKSYNVTNGT DNQICYQIFDTTVAEDVI



Western blot analysis of extracts of various cell lines, using POT1 antibody (STJ25058) at 1:1000 dilution. Secondary antibody: HRP Goat Anti-Rabbit IgG (H+L) (STJ5000856) at 1:10000 dilution. Lysates/proteins: 25 µg per lane. Blocking buffer: 3% nonfat dry milk in TBST. Detection: ECL Basic Kit. Exposure time: 30s.

This product is suitable for in-vitro studies under the RESEARCH USE ONLY [RUO] licence. This product must not be used as for diagnostic or other medical purposes.
St John's Laboratory Ltd, Knowledge Dock Business Centre, University Way, London, E16 2RD | Tel: 0208 223 3081