

Anti-POLI antibody (50-350) (STJ25042)
STJ25042

GENERAL INFORMATION

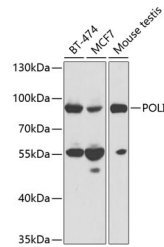
Product Type	Primary antibodies
Short Description	
Applications	WB/ELISA
Host/Source	Rabbit
Reactivity	Human/Mouse

PRODUCT PROPERTIES

Clonality	Polyclonal
Clone ID	
Concentration	Lot specific
Conjugation	Unconjugated
Purification	Affinity purification
Dilution	WB:1:500-1:2000
Range	ELISA:Recommended starting concentration is 1 Mu g/mL. Please optimize the concentration based on your specific assay requirements.
Formulation	PBS with 0.02% Sodium Azide, 50% Glycerol, pH 7.3.
Isotype	IgG
Storage	Store at -20°C for up to 1 year from the date of receipt, and avoid repeat freeze-thaw cycles.
Instruction	

TARGET INFORMATION

Gene ID	11201
Gene Symbol	POL1
Uniprot ID	POL1_HUMAN
Immunogen	
Immunogen Region	50-350
Specificity	Recombinant fusion protein containing a sequence corresponding to amino acids 50-350 of human POL1 (NP_009126.2).
Immunogen Sequence	ASSRVIVHVDLDCFYAQVEM ISNPELKDKPLGVQQKYLVV TCNYEARKLGVKKLMNVRDA KEKCPQLVLVNGEDLTRYRE MSYKVTELLEEFSPVVERLG FDENFVDLTEMVEKRLQQLQ SDELSAVTVSGHVYNNQSIN LLDVLHIRLLVGSQIAAEMR EAMYNQLGLTGCGAGVASNKL LAKLVSGVFKPNQQTVLLPE SCQHLIHSLNHIKEIPGIGY KTAKCLEALGINSVRDLQT



Western blot analysis of extracts of various cell lines, using POL1 antibody (STJ25042) at 1:1000 dilution. Secondary antibody: HRP Goat Anti-Rabbit IgG (H+L) (STJS000856) at 1:10000 dilution. Lysates/proteins: 25 Mu g per lane. Blocking buffer: 3% nonfat dry milk in TBST.

This product is suitable for in-vitro studies under the RESEARCH USE ONLY [RUO] licence. This product must not be used as for diagnostic or other medical purposes.
St John's Laboratory Ltd, Knowledge Dock Business Centre, University Way, London, E16 2RD | Tel: 0208 223 3081