

**Anti-PEBP1 antibody (1-187) (STJ24954)**  
STJ24954

**GENERAL INFORMATION**

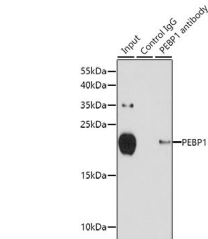
<b>Product Type</b>	Primary antibodies
<b>Short Description</b>	
<b>Applications</b>	WB/IF/ICC/IP/ELISA
<b>Host/Source</b>	Rabbit
<b>Reactivity</b>	Human/Mouse/Rat

**PRODUCT PROPERTIES**

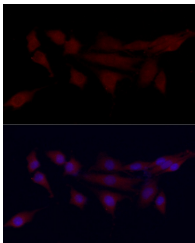
<b>Clonality</b>	Polyclonal
<b>Clone ID</b>	
<b>Concentration</b>	Lot specific
<b>Conjugation</b>	Unconjugated
<b>Purification</b>	Affinity purification
<b>Dilution</b>	WB:1:500-1:1000
<b>Range</b>	IF/CC:1:50-1:200 IP:0.5 Mu g-4 Mu g antibody for 200 Mu g-400 Mu g extracts of whole cells ELISA:Recommended starting concentration is 1 Mu g/mL. Please optimize the concentration based on your specific assay requirements
<b>Formulation</b>	PBS with 0.02% Sodium Azide, 50% Glycerol, pH 7.3.
<b>Isotype</b>	IgG
<b>Storage</b>	Store at-20°C for up to 1 year from the date of receipt, and avoid repeat freeze-thaw cycles.
<b>Instruction</b>	

**TARGET INFORMATION**

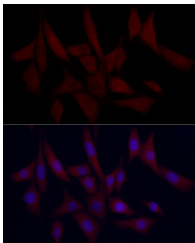
<b>Gene ID</b>	5037
<b>Gene Symbol</b>	PEBP1
<b>Uniprot ID</b>	PEBP1_HUMAN
<b>Immunogen</b>	
<b>Immunogen Region</b>	1-187
<b>Specificity</b>	Recombinant fusion protein containing a sequence corresponding to amino acids 1-187 of human PEBP1 (NP_002558.1).
<b>Immunogen Sequence</b>	MPVDLSKWSGPLSLQEVD EQ PQHPLHVTYAGAAVDELGKV LTPTQVKNRPTSISWDGLDS GKLYTLVLTDPDAPSRKDPK YREWHFLVVMKGNDISG TVLSDYVGSGPPKGTGLHRY VWLVYEQDRPLKCDEPILSN RSGDHRGKFVASFRRKKYEL RAPVAGTCYQAEWDDYVPKL YEQLSGK



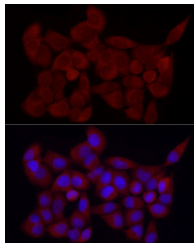
Immunoprecipitation analysis of 150 Mu g extracts of MCF-7 cells using 3 Mu g PEBP1 antibody (STJ24954). Western blot was performed from the immunoprecipitate using PEBP1 antibody (STJ24954) at a dilution of 1:500.



Immunofluorescence analysis of PC-12 cells using PEBP1 Rabbit polyclonal antibody (STJ24954) at dilution of 1:25 (40x lens). Secondary antibody: Cy3 Goat Anti-Rabbit IgG (H+L) at 1:500 dilution. Blue: DAPI for nuclear staining.



Immunofluorescence analysis of NIH/3T3 cells using PEBP1 Rabbit polyclonal antibody (STJ24954) at dilution of 1:25 (40x lens). Secondary antibody: Cy3 Goat Anti-Rabbit IgG (H+L) at 1:500 dilution. Blue: DAPI for nuclear staining.



Immunofluorescence analysis of HeLa cells using PEBP1 Rabbit polyclonal antibody (STJ24954) at dilution of 1:25 (40x lens). Secondary antibody: Cy3 Goat Anti-Rabbit IgG (H+L) at 1:500 dilution. Blue: DAPI for nuclear staining.

This product is suitable for in-vitro studies under the RESEARCH USE ONLY [RUO] licence. This product must not be used as for diagnostic or other medical purposes.  
St John's Laboratory Ltd, Knowledge Dock Business Centre, University Way, London, E16 2RD | Tel: 0208 223 3081