

Anti-PDPK1 antibody (409-556) (STJ24950)

STJ24950

GENERAL INFORMATION

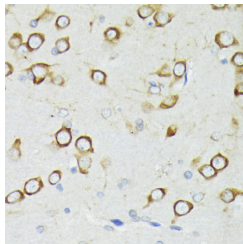
Product Type	Primary antibodies
Short Description	
Applications	WB/IHC-P/ELISA
Host/Source	Rabbit
Reactivity	Human/Mouse/Rat

PRODUCT PROPERTIES

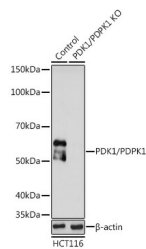
Clonality	Polyclonal
Clone ID	
Concentration	Lot specific
Conjugation	Unconjugated
Purification	Affinity purification
Dilution	WB: 1:500-1:1000
Range	IHC-P: 1:50-1:200
	ELISA: Recommended starting concentration is 1 µg/mL. Please optimize the concentration based on your specific assay requirements.
Formulation	PBS with 0.02% Sodium Azide, 50% Glycerol, pH 7.3.
Isotype	IgG
Storage Instruction	Store at -20°C for up to 1 year from the date of receipt, and avoid repeat freeze-thaw cycles.

TARGET INFORMATION

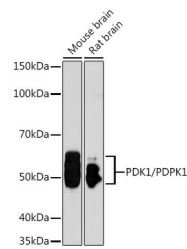
Gene ID	5170
Gene Symbol	PDPK1
Uniprot ID	PDPK1_HUMAN
Immunogen	
Immunogen Region	409-556
Specificity	Recombinant fusion protein containing a sequence corresponding to amino acids 409-556 of human PDK1/PDPK1 (NP_002604.1).
Immunogen Sequence	GSNIEQYIHLDLSNSFELD QFSEDEKRLLEKQAGGNPW HQFVENNLILKMGVDRKRG LFARRRQLLLTEGPHLYYVD PVNKVLKGEIPWSQELRPEA KNFKTFVHTPNRTYYLMDP SGNNAHKWCRKIQEVRQRYQ SHPDAAVQ



Immunohistochemistry analysis of paraffin-embedded rat brain using PDPK1 antibody (STJ24950) at dilution of 1:200 (40x lens). Perform microwave antigen retrieval with 10 mM PBS buffer pH 7.2 before commencing with immunohistochemistry staining protocol.



Western blot analysis of extracts from normal (control) and PDK1/PDPK1 knockout (KO) HCT116 cells, using PDPK1/PDPK1 antibody (STJ24950) at 1:1000 dilution. Secondary antibody: HRP Goat Anti-Rabbit IgG (H+L) (STJS000856) at 1:10000 dilution. Lysates/proteins: 25 µg per lane. Blocking buffer: 3% nonfat dry milk in TBST. Detection: ECL Basic Kit. Exposure time: 90s.



Western blot analysis of extracts of various cell lines, using PDK1/PDPK1 antibody (STJ24950) at 1:1000 dilution. Secondary antibody: HRP Goat Anti-Rabbit IgG (H+L) (STJS000856) at 1:10000 dilution. Lysates/proteins: 25 µg per lane. Blocking buffer: 3% nonfat dry milk in TBST. Detection: ECL Basic Kit. Exposure time: 90s.

This product is suitable for in-vitro studies under the RESEARCH USE ONLY [RUO] licence. This product must not be used as for diagnostic or other medical purposes.
St John's Laboratory Ltd, Knowledge Dock Business Centre, University Way, London, E16 2RD | Tel: 0208 223 3081