

Anti-PDIA3 antibody (206-505) (STJ24942)
STJ24942

GENERAL INFORMATION

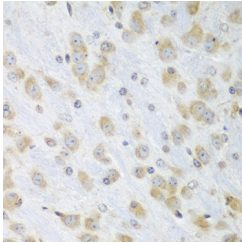
Product Type	Primary antibodies
Short Description	
Applications	WB/IHC-P/IF/ICC/ELISA
Host/Source	Rabbit
Reactivity	Human/Mouse/Rat

PRODUCT PROPERTIES

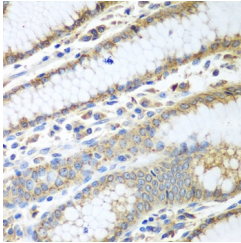
Clonality	Polyclonal
Clone ID	
Concentration	Lot specific
Conjugation	Unconjugated
Purification	Affinity purification
Dilution	WB:1:500-1:2000
Range	IHC-P:1:50-1:100 IF/ICC:1:50-1:100 ELISA:Recommended starting concentration is 1 Mu g/mL. Please optimize the concentration based on your specific assay requirements.
Formulation	PBS with 0.02% Sodium Azide, 50% Glycerol, pH 7.3.
Isotype	IgG
Storage	Store at-20°C for up to 1 year from the date of receipt, and avoid repeat freeze-thaw cycles.
Instruction	

TARGET INFORMATION

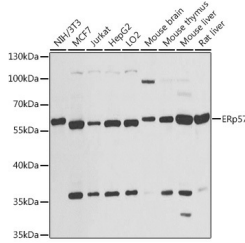
Gene ID	2923
Gene Symbol	PDIA3
Uniprot ID	PDIA3_HUMAN
Immunogen	
Immunogen Region	206-505
Specificity	Recombinant fusion protein containing a sequence corresponding to amino acids 206-505 of human ERp57 (NP_005304.3).
Immunogen Sequence	FRPSHLTNKFEDKTVAYTEQ KMTSGKIKKFIQENIFGICP HMTEDNKDLIQGKDLLIAYY DVDYEKNAKGSNYWRNRVMM VAKKFLDAGHKLNFAVASRK TFSHELSDFGLESTAGEIPV VAIRTAKEGEKFMQEFEFRD GKALERFLQDYFDGNLKRYL KSEPIPESNDGPVKVVAEN FDEIVNNENKDVLIIFYAPW CGHCKNLEPKYKELGEKLSK DPNIVIAKMDATANDVPSP



Immunohistochemistry analysis of paraffin-embedded mouse brain using ERp57 antibody (STJ24942) at dilution of 1:100 (40x lens). Perform microwave antigen retrieval with 10 mM PBS buffer pH 7. 2 before commencing with immunohistochemistry staining protocol.



Immunohistochemistry analysis of paraffin-embedded human stomach using ERp57 antibody (STJ24942) at dilution of 1:100 (40x lens). Perform microwave antigen retrieval with 10 mM PBS buffer pH 7. 2 before commencing with immunohistochemistry staining protocol.



Western blot analysis of extracts of various cell lines, using ERp57 antibody (STJ24942) at 1:1000 dilution. Secondary antibody: HRP Goat Anti-Rabbit IgG (H+L) (STJS000856) at 1:10000 dilution. Lysates/proteins: 25 Mu.g per lane. Blocking buffer: 3% nonfat dry milk in TBST. Detection: ECL Basic Kit. Exposure time: 30s.

This product is suitable for in-vitro studies under the RESEARCH USE ONLY [RUO] licence. This product must not be used as for diagnostic or other medical purposes.
St John's Laboratory Ltd, Knowledge Dock Business Centre, University Way, London, E16 2RD | Tel: 0208 223 3081