

Anti-PDGFRα antibody (896-1089) (STJ24937)

STJ24937

GENERAL INFORMATION

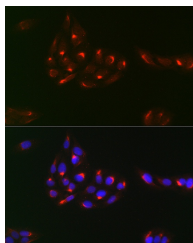
Product Type	Primary antibodies
Short Description	
Applications	WB/IHC-P/IF/ICC/ELISA
Host/Source	Rabbit
Reactivity	Human/Mouse/Rat

PRODUCT PROPERTIES

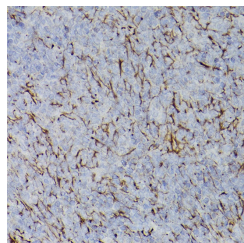
Clonality	Polyclonal
Clone ID	
Concentration	Lot specific
Conjugation	Unconjugated
Purification	Affinity purification
Dilution Range	WB:1:500-1:1000 IHC-P:1:50-1:200 IF/ICC:1:50-1:200 ELISA:Recommended starting concentration is 1 µg/mL. Please optimize the concentration based on your specific assay requirements.
Formulation	PBS with 0.02% Sodium Azide, 50% Glycerol, pH 7.3.
Isotype	IgG
Storage	Store at -20°C for up to 1 year from the date of receipt, and avoid repeat freeze-thaw cycles.
Instruction	

TARGET INFORMATION

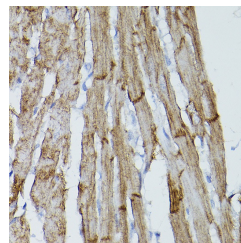
Gene ID	5156
Gene Symbol	PDGFRA
Uniprot ID	PGFRA_HUMAN
Immunogen	
Region	896-1089
Specificity	Recombinant fusion protein containing a sequence corresponding to amino acids 896-1059 of human PDGFR alpha (NP_006197.1).
Immunogen Sequence	YPGMMVDSTFYNKIKSGYRM AKPDHATSEVYEIMVKWNS EPEKRPSFYHLSEIVENLLP GQYKKSYPEKIHLDFLKSDHP AVARMRVDSNAYIGVITYKN EEDKLKDWEGGLDEQRSLAD SGYIPLPDIDPVVEEDLG KRNHRSSQTSEESAIEGSS SSTF



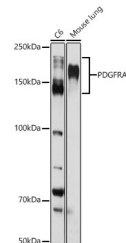
Immunofluorescence analysis of U2OS using PDGFRα antibody (STJ24937) at dilution of 1:100 (40x lens). Blue: DAPI for nuclear staining.



Immunohistochemistry analysis of paraffin-embedded rat spleen using PDGFRα antibody (STJ24937) at dilution of 1:50 (40x lens). Perform high pressure antigen retrieval with 10 mM citrate buffer pH 6.0 before commencing with immunohistochemistry staining protocol.



Immunohistochemistry analysis of paraffin-embedded mouse heart using PDGFRα antibody (STJ24937) at dilution of 1:50 (40x lens). Perform high pressure antigen retrieval with 10 mM citrate buffer pH 6.0 before commencing with immunohistochemistry staining protocol.



Western blot analysis of extracts of various cell lines using PDGFRα antibody (STJ24937) at 1:1000 dilution. Secondary antibody: HRP Goat Anti-Rabbit IgG (H+L) (STJ5000856) at 1:10000 dilution. Lysates/proteins: 25 µg per lane. Blocking buffer: 3% nonfat dry milk in TBST. Detection: ECL Basic Kit. Exposure time: 30s.

This product is suitable for in-vitro studies under the RESEARCH USE ONLY [RUO] licence. This product must not be used as for diagnostic or other medical purposes.

St John's Laboratory Ltd, Knowledge Dock Business Centre, University Way, London, E16 2RD | Tel: 0208 223 3081