

**Anti-PCNA antibody (162-261) (STJ24918)**  
STJ24918

**GENERAL INFORMATION**

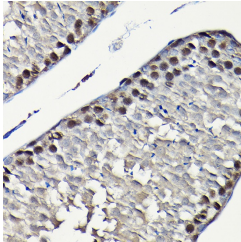
<b>Product Type</b>	Primary antibodies
<b>Short Description</b>	
<b>Applications</b>	WB/IHC-P/IF/ICC/ELISA
<b>Host/Source</b>	Rabbit
<b>Reactivity</b>	Human/Mouse/Rat

**PRODUCT PROPERTIES**

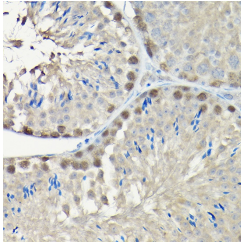
<b>Clonality</b>	Polyclonal
<b>Clone ID</b>	
<b>Concentration</b>	Lot specific
<b>Conjugation</b>	Unconjugated
<b>Purification</b>	Affinity purification
<b>Dilution Range</b>	WB:1:500-1:2000 IHC-P:1:50-1:200 IF/ICC:1:50-1:200 ELISA:Recommended starting concentration is 1 $\mu$ g/mL. Please optimize the concentration based on your specific assay requirements.
<b>Formulation</b>	PBS with 0.09% Sodium Azide, 50% Glycerol, pH 7.3.
<b>Isotype</b>	IgG
<b>Storage Instruction</b>	Store at -20°C for up to 1 year from the date of receipt, and avoid repeat freeze-thaw cycles.

**TARGET INFORMATION**

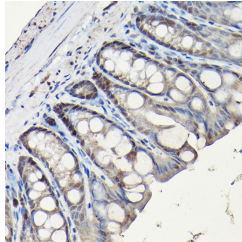
<b>Gene ID</b>	5111
<b>Gene Symbol</b>	PCNA
<b>Uniprot ID</b>	PCNA_HUMAN
<b>Immunogen</b>	
<b>Immunogen Region</b>	162-261
<b>Specificity</b>	A synthetic peptide corresponding to a sequence within amino acids 162-261 of human PCNA (NP_002583.1).
<b>Immunogen Sequence</b>	CAKDGVKFSASGELGNGNIK LSQTSNVDKEEEAVTIEMNE PVQLTFALRYLNFFTKATPL SSTVTLSMSADVPLVVEYKI ADMGHLLKYYLAPKIEDEEGS



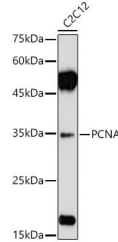
Immunohistochemistry analysis of paraffin-embedded rat testis using PCNA Rabbit polyclonal antibody (STJ24918) at dilution of 1:200 (40x lens). Perform high pressure antigen retrieval with 10 mM citrate buffer pH 6.0 before commencing with immunohistochemistry staining protocol.



Immunohistochemistry analysis of paraffin-embedded mouse testis using PCNA Rabbit polyclonal antibody (STJ24918) at dilution of 1:200 (40x lens). Perform high pressure antigen retrieval with 10 mM citrate buffer pH 6.0 before commencing with immunohistochemistry staining protocol.



Immunohistochemistry analysis of paraffin-embedded mouse colon using PCNA Rabbit polyclonal antibody (STJ24918) at dilution of 1:200 (40x lens). Perform high pressure antigen retrieval with 10 mM citrate buffer pH 6.0 before commencing with immunohistochemistry staining protocol.



Western blot analysis of extracts of various cell lines, using PCNA antibody (STJ24918) at 1:1000 dilution. Secondary antibody: HRP Goat Anti-Rabbit IgG (H+L) (STJ5000856) at 1:10000 dilution. Lysates/proteins: 25  $\mu$ g per lane. Blocking buffer: 3% nonfat dry milk in TBST. Detection: ECL Basic Kit. Exposure time: 90s.