

Anti-PAX5 antibody (150-300) (STJ24910)

STJ24910

GENERAL INFORMATION

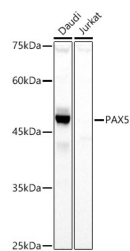
Product Type	Primary antibodies
Short Description	
Applications	WB/IP/ELISA
Host/Source	Rabbit
Reactivity	Human

PRODUCT PROPERTIES

Clonality	Polyclonal
Clone ID	
Concentration	Lot specific
Conjugation	Unconjugated
Purification	Affinity purification
Dilution	WB: 1:500-1:1000
Range	IP: 0.5 Mu g-4 Mu g antibody for 200 Mu g-400 Mu g extracts of whole cells ELISA: Recommended starting concentration is 1 Mu g/mL. Please optimize the concentration based on your specific assay requirements.
Formulation	PBS with 0.05% Proclin300, 50% Glycerol, pH 7.3.
Isotype	IgG
Storage Instruction	Store at -20°C for up to 1 year from the date of receipt, and avoid repeat freeze-thaw cycles.

TARGET INFORMATION

Gene ID	5079
Gene Symbol	PAX5
Uniprot ID	PAX5_HUMAN
Immunogen	
Immunogen Region	150-300
Specificity	Recombinant fusion protein containing a sequence corresponding to amino acids 150-300 of human PAX5 (NP_057953.1).
Immunogen Sequence	PVPASSHSIVSTGSGVTQVSS VSTDAGSSYSISGILGITS PSADTNKRKRDEGIQESPVP NGHSLPGRDFLRKQMRGDLF TQQQLVLDLVFERQHYSDI FTTTEPIKPEQTTEYSAMAS LAGGLDDMKANLASPTPADI GSSVPGPQSYF



Western blot analysis of various lysates using PAX5 Rabbit polyclonal antibody (STJ24910) at 1:1000 dilution. Secondary antibody: HRP Goat Anti-Rabbit IgG (H+L) (STJS000856) at 1:10000 dilution. Lysates/proteins: 25 Mu g per lane. Blocking buffer: 3% nonfat dry milk in TBST. Detection: ECL Basic Kit. Exposure time: 30s.

This product is suitable for in-vitro studies under the RESEARCH USE ONLY [RUO] licence. This product must not be used as for diagnostic or other medical purposes.
St John's Laboratory Ltd, Knowledge Dock Business Centre, University Way, London, E16 2RD | Tel: 0208 223 3081