

Anti-PAX2 antibody (150-320) (STJ24908)

STJ24908

GENERAL INFORMATION

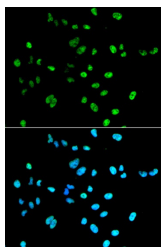
Product Type	Primary antibodies
Short Description	
Applications	WB/IF/ICC/ELISA
Host/Source	Rabbit
Reactivity	Human/Mouse/Rat

PRODUCT PROPERTIES

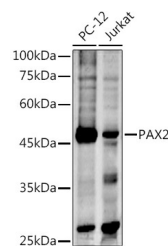
Clonality	Polyclonal
Clone ID	
Concentration	Lot specific
Conjugation	Unconjugated
Purification	Affinity purification
Dilution	WB:1:100-1:500
Range	IF/CC:1:50-1:200
	ELISA:Recommended starting concentration is 1 Mu g/mL. Please optimize the concentration based on your specific assay requirements.
Formulation	PBS with 0.05% Proclin300, 50% Glycerol, pH 7.3.
Isotype	IgG
Storage	Store at -20°C for up to 1 year from the date of receipt, and avoid repeat freeze-thaw cycles.
Instruction	

TARGET INFORMATION

Gene ID	5076
Gene Symbol	PAX2
Uniprot ID	PAX2_HUMAN
Immunogen	
Immunogen Region	150-320
Specificity	Recombinant fusion protein containing a sequence corresponding to amino acids 150-320 of human PAX2 (NP_003978.3).
Immunogen Sequence	TPDGAGTGVTPAGHTIVPST ASPPVSSASNDPVGSYSING ILGIPRSNGEKRKRDEVEVY TDPAHIRGGGGLHLWTLRD VSEGSVPNGDSQSGVDSLRLK HLRADTFTQQQLEALDRVFE RPSYPDVFQASEHIKSEQGN EYSLPALTPGLDEVKSSLSA STNPELGSNV



Immunofluorescence analysis of A549 cells using PAX2 antibody (STJ24908). Blue: DAPI for nuclear staining.



Western blot analysis of extracts of various cell lines, using PAX2 antibody (STJ24908) at 1:500 dilution. Secondary antibody: HRP Goat Anti-Rabbit IgG (H+L) (STJS000856) at 1:10000 dilution. Lysates/proteins: 25 Mu g per lane. Blocking buffer: 3% nonfat dry milk in TBST. Detection: ECL Enhanced Kit. Exposure time: 180s.

This product is suitable for in-vitro studies under the RESEARCH USE ONLY [RUO] licence. This product must not be used as for diagnostic or other medical purposes.
St John's Laboratory Ltd, Knowledge Dock Business Centre, University Way, London, E16 2RD | Tel: 0208 223 3081