

Anti-PRKN antibody (81-280) (STJ24894)
STJ24894

GENERAL INFORMATION

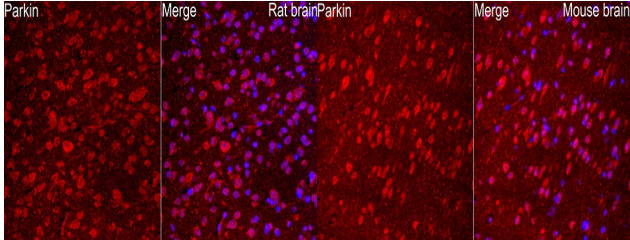
Product Type	Primary antibodies
Short Description	
Applications	WB/IHC-P/IF/ICC/ELISA
Host/Source	Rabbit
Reactivity	Human/Mouse/Rat

PRODUCT PROPERTIES

Clonality	Polyclonal
Clone ID	
Concentration	Lot specific
Conjugation	Unconjugated
Purification	Affinity purification
Dilution	WB:1:500-1:1000
Range	IHC-P:1:50-1:200 IF/ICC:1:50-1:200 ELISA:Recommended starting concentration is 1 μ g/mL. Please optimize the concentration based on your specific assay requirements.
Formulation	PBS with 0.05% Proclin300, 50% Glycerol, pH 7.3.
Isotype	IgG
Storage	Store at -20°C for up to 1 year from the date of receipt, and avoid repeat freeze-thaw cycles.
Instruction	

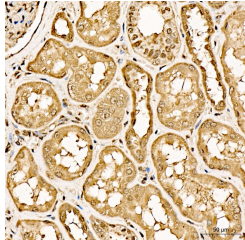
TARGET INFORMATION

Gene ID	5071
Gene Symbol	PRKN
Uniprot ID	PRKN_HUMAN
Immunogen	81-280
Region	
Specificity	Recombinant fusion protein containing a sequence corresponding to amino acids 81-280 of human Parkin (NP_004553.2).
Immunogen Sequence	NATGGDDPRNAAGGCEREPEQ SLTRVDLSSSVLPGDSVGLA VILHTDSRKDSPAGSPAGR SIYNSFYVYCKGPCQVRVQPG KLRVQCSTCRQATLTLTQGP SCWDDVLIPNRMSEGECQSPH CPGTSAEFFFFKCGAHTPSDK ETSVALHLIATNSRNITCIT CTDVRSPVLVFCNSRHHVIC LDCFHLYCVTRLNDRQFVHD

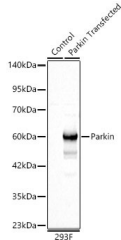


Immunofluorescence analysis of paraffin-embedded rat brain using Parkin Rabbit polyclonal antibody (STJ24894) at dilution of 1:50 (40x lens). Secondary antibody: Cy3 Goat Anti-Rabbit IgG (H+L) at 1:500 dilution. Blue: DAPI for nuclear staining. Perform microwave antigen retrieval with 0. 01M citrate buffer (pH 6. 0) prior to IF staining.

Immunofluorescence analysis of paraffin-embedded mouse brain using Parkin Rabbit polyclonal antibody (STJ24894) at dilution of 1:50 (40x lens). Secondary antibody: Cy3 Goat Anti-Rabbit IgG (H+L) at 1:500 dilution. Blue: DAPI for nuclear staining. Perform microwave antigen retrieval with 0. 01M citrate buffer (pH 6. 0) prior to IF staining.



Immunohistochemistry analysis of Parkin in paraffin-embedded human kidney using Parkin Rabbit polyclonal antibody (STJ24894) at dilution of 1:100 (40x lens). Perform high pressure antigen retrieval with 10 mM citrate buffer pH 6. 0 before commencing with immunohistochemistry staining protocol.



Western blot analysis of lysates from wild type (WT) and 293T cells transfected with Parkin using Parkin Rabbit polyclonal antibody (STJ24894) at 1:1000 dilution. Secondary antibody: HRP Goat Anti-Rabbit IgG (H+L) (STJ5000856) at 1:10000 dilution. Lysates/proteins: 25 μ g per lane. Blocking buffer: 3% nonfat dry milk in TBST. Detection: ECL Basic Kit. Exposure time: 5 s.

This product is suitable for in-vitro studies under the RESEARCH USE ONLY [RUO] licence. This product must not be used as for diagnostic or other medical purposes.
St John's Laboratory Ltd, Knowledge Dock Business Centre, University Way, London, E16 2RD | Tel: 0208 223 3081