

Anti-OLFM1 antibody (90-220) (STJ24864)

STJ24864

GENERAL INFORMATION

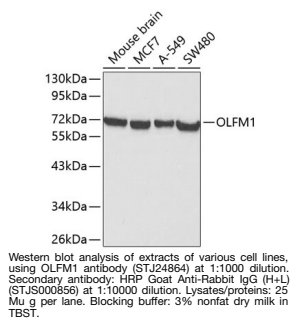
Product Type	Primary antibodies
Short Description	
Applications	WB/ELISA
Host/Source	Rabbit
Reactivity	Human/Mouse

PRODUCT PROPERTIES

Clonality	Polyclonal
Clone ID	
Concentration	Lot specific
Conjugation	Unconjugated
Purification	Affinity purification
Dilution Range	WB:1:500-1:2000
	ELISA: Recommended starting concentration is 1 µg/mL. Please optimize the concentration based on your specific assay requirements.
Formulation	PBS with 0.02% Sodium Azide, 50% Glycerol, pH 7.3.
Isotype	IgG
Storage Instruction	Store at -20°C for up to 1 year from the date of receipt, and avoid repeat freeze-thaw cycles.

TARGET INFORMATION

Gene ID	10439
Gene Symbol	OLFM1
Uniprot ID	NOE1_HUMAN
Immunogen	
Immunogen Region	90-220
Specificity	Recombinant fusion protein containing a sequence corresponding to amino acids 90-220 of human OLFM1 (NP_055094.1).
Immunogen Sequence	IEVLDRRTQDRLQYVEKMEN QMKGLESKFKQVEESHKQHL ARQFKAIAKAKMDELRLIPV LEEYKADAKLVLQFKEEVQN LTSVLNELQEEIGAYDYDEL QSRVSNLEERLRACMQKLAC GKLTGISDPVT



This product is suitable for in-vitro studies under the RESEARCH USE ONLY [RUO] licence. This product must not be used as for diagnostic or other medical purposes.
St John's Laboratory Ltd, Knowledge Dock Business Centre, University Way, London, E16 2RD | Tel: 0208 223 3081