

Anti-NR0B2 antibody (1-257) (STJ24808)
STJ24808

GENERAL INFORMATION

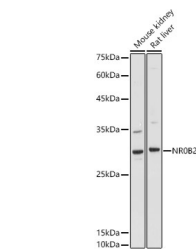
Product Type	Primary antibodies
Short Description	
Applications	WB/ELISA
Host/Source	Rabbit
Reactivity	Human/Mouse/Rat

PRODUCT PROPERTIES

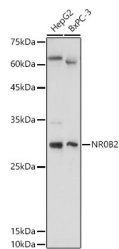
Clonality	Polyclonal
Clone ID	
Concentration	Lot specific
Conjugation	Unconjugated
Purification	Affinity purification
Dilution	WB:1:100-1:500
Range	ELISA:Recommended starting concentration is 1 μ g/mL. Please optimize the concentration based on your specific assay requirements.
Formulation	PBS with 0.09% Sodium Azide, 50% Glycerol, pH 7.3.
Isotype	IgG
Storage	Store at -20°C for up to 1 year from the date of receipt, and avoid repeat freeze-thaw cycles.
Instruction	

TARGET INFORMATION

Gene ID	8431
Gene Symbol	NR0B2
Uniprot ID	NR0B2_HUMAN
Immunogen	
Immunogen Region	1-257
Specificity	Recombinant fusion protein containing a sequence corresponding to amino acids 1-257 of human SHP/NR0B2 (NP_068804.1).
Immunogen Sequence	MSTSQPGACPCQGAASRPAL LYALLSSSLKAVPRPRSRCL CRQHRPVQLCAPHRTCREAL DVLAKTVAFRLNLPFWQLP PQDQRRLLQGCWGPLFLLGL AQDAVTFEVAEAPVPSILKK ILLEEPSSSGGSGQLPDRPQ PSLAAVQWLQCCLESFWSLE LSPKEYACKGTILFNPDVP GLQAASHIGHLQGEAHWVLC EVLEPWCPAAQGRLTRVLLT ASTLKS IPTSL LGDLFFRP



Western blot analysis of extracts of various cell lines, using NR0B2 antibody (STJ24808) at 1:500 dilution. Secondary antibody: HRP Goat Anti-rabbit IgG (H+L) at 1:10000 dilution. Lysates/proteins: 25 μ g per lane. Blocking buffer: 3% nonfat dry milk in TBST. Detection: ECL Basic Kit. Exposure time: 30s.



Western blot analysis of extracts of various cell lines, using NR0B2 antibody (STJ24808) at 1:500 dilution. Secondary antibody: HRP Goat Anti-rabbit IgG (H+L) at 1:10000 dilution. Lysates/proteins: 25 μ g per lane. Blocking buffer: 3% nonfat dry milk in TBST. Detection: ECL Basic Kit. Exposure time: 90s.

This product is suitable for in-vitro studies under the RESEARCH USE ONLY [RUO] licence. This product must not be used as for diagnostic or other medical purposes.
St John's Laboratory Ltd, Knowledge Dock Business Centre, University Way, London, E16 2RD | Tel: 0208 223 3081