

Anti-NPHS1 antibody (1019-1241) (STJ24794)

STJ24794

GENERAL INFORMATION

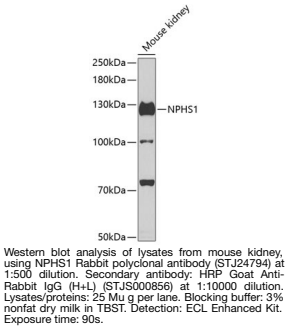
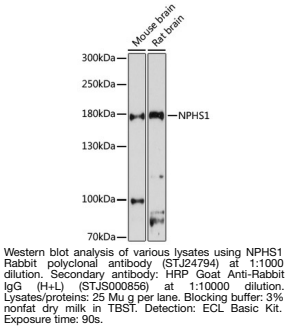
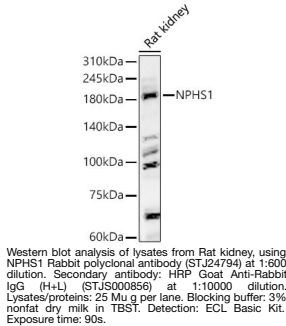
Product Type	Primary antibodies
Short Description	
Applications	WB/ELISA
Host/Source	Rabbit
Reactivity	Mouse/Rat

PRODUCT PROPERTIES

Clonality	Polyclonal
Clone ID	
Concentration	Lot specific
Conjugation	Unconjugated
Purification	Affinity purification
Dilution	WB:1:500-1:1000
Range	ELISA:Recommended starting concentration is 1 Mu g/mL. Please optimize the concentration based on your specific assay requirements.
Formulation	PBS with 0.05% Proclin300, 50% Glycerol, pH 7.3.
Isotype	IgG
Storage	Store at -20°C for up to 1 year from the date of receipt, and avoid repeat freeze-thaw cycles.
Instruction	

TARGET INFORMATION

Gene ID	4868
Gene Symbol	NPHS1
Uniprot ID	NPHN_HUMAN
Immunogen	
Immunogen Region	1019-1241
Specificity	Recombinant fusion protein containing a sequence corresponding to amino acids 1019-1241 of human NPHS1 (NP_004637.1). LGDSGLADKGTQLPITTPGL HQPSGEPEDQLPTEPPSGPS GLPLLVLVLFALGGLLLLSNA SCVGGVLWQRRRLRLAEGIS EKTEAGSEEDRVRYEYESQ WTGERDTQSSTVSTTEAEPY YRSLRDFSPQLPPTQEEVSYSRSGFTGEDEDMAPFGHLYDE VERTYPPSGAWGPLYDEVQM GPWDLHWPEDTYQDPRGIYD QVAGDLDTLEPDSLPLFELRG HLV
Immunogen Sequence	



This product is suitable for in-vitro studies under the RESEARCH USE ONLY [RUO] licence. This product must not be used as for diagnostic or other medical purposes.
St John's Laboratory Ltd, Knowledge Dock Business Centre, University Way, London, E16 2RD | Tel: 0208 223 3081