

Anti-NCF4 antibody (1-190) (STJ24700)

STJ24700

GENERAL INFORMATION

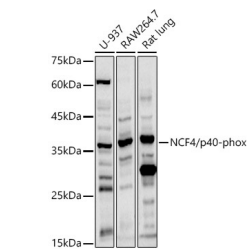
Product Type	Primary antibodies
Short Description	
Applications	WB/ELISA
Host/Source	Rabbit
Reactivity	Human/Mouse/Rat

PRODUCT PROPERTIES

Clonality	Polyclonal
Clone ID	
Concentration	Lot specific
Conjugation	Unconjugated
Purification	Affinity purification
Dilution	WB:1:500-1:1000
Range	ELISA:Recommended starting concentration is 1 µg/mL. Please optimize the concentration based on your specific assay requirements.
Formulation	PBS with 0.09% Sodium Azide, 50% Glycerol, pH 7.3.
Isotype	IgG
Storage	Store at -20°C for up to 1 year from the date of receipt, and avoid repeat freeze-thaw cycles.
Instruction	

TARGET INFORMATION

Gene ID	4689
Gene Symbol	NCF4
Uniprot ID	NCF4_HUMAN
Immunogen	
Immunogen Region	1-190
Specificity	A synthetic peptide corresponding to a sequence within amino acids 1-190 of human NCF4/p40-phox (NP_038202.2).
Immunogen Sequence	MAVAQQLRAESDFEQLPDDV AISANIADIEEKRGFTSHFV FVIEVKTKGGSKYLIYRRYR QFHALQSKLEERFGPDSKSS ALACTLPTLPAKVYVGKQE IAEMRIPALNAYMKSLLSLP VWVLMDEDVRIFYQSPYDS EQVPQALRRLRPRTKVKSV SPQGNVSDRMAAPRAEALFD FTGNSKLELN



Western blot analysis of extracts of various cell lines, using NCF4/p40-phox antibody (STJ24700) at 1:1000 dilution. Secondary antibody: HRP Goat Anti-Rabbit IgG (H+L) (STJS000856) at 1:10000 dilution. Lysates/proteins: 25 µg per lane. Blocking buffer: 3% nonfat dry milk in TBST. Detection: ECL Basic Kit. Exposure time: 30s.

This product is suitable for in-vitro studies under the RESEARCH USE ONLY [RUO] licence. This product must not be used as for diagnostic or other medical purposes.
St John's Laboratory Ltd, Knowledge Dock Business Centre, University Way, London, E16 2RD | Tel: 0208 223 3081