

Anti-NCAM1 antibody (759-858) (STJ24694)

STJ24694

GENERAL INFORMATION

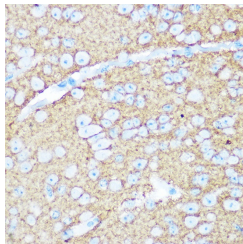
Product Type	Primary antibodies
Short Description	
Applications	WB/IHC-P/ELISA
Host/Source	Rabbit
Reactivity	Mouse/Rat

PRODUCT PROPERTIES

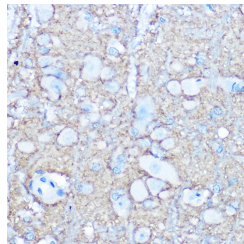
Clonality	Polyclonal
Clone ID	
Concentration	Lot specific
Conjugation	Unconjugated
Purification	Affinity purification
Dilution Range	WB:1:500-1:1000 IHC-P:1:50-1:200 ELISA:Recommended starting concentration is 1 Mu g/mL. Please optimize the concentration based on your specific assay requirements.
Formulation	PBS with 0.02% Sodium Azide, 50% Glycerol, pH 7.3.
Isotype	IgG
Storage	Store at -20°C for up to 1 year from the date of receipt, and avoid repeat freeze-thaw cycles.
Instruction	

TARGET INFORMATION

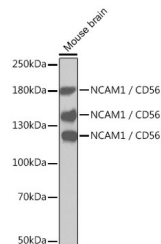
Gene ID	4684
Gene Symbol	NCAM1
Uniprot ID	NCAM1_HUMAN
Immunogen	
Immunogen Region	759-858
Specificity	Recombinant fusion protein containing a sequence corresponding to amino acids 759-858 of human NCAM1/CD56 (NP_851996.2).
Immunogen Sequence	LCGKAGPGAKGKDMEEGKAA FSKDESKPEIVEVREEERT PNHDGGKHTEPNETTLPTEP EKGPEAKPECQETETKPAP AEVKTPVNDATQTKENESKA



Immunohistochemistry analysis of paraffin-embedded mouse brain using NCAM1/CD56 Rabbit polyclonal antibody (STJ24694) at dilution of 1:100 (40x lens). Perform microwave antigen retrieval with 10 mM Tris/EDTA buffer pH 9.0 before commencing with immunohistochemistry staining protocol.



Immunohistochemistry analysis of paraffin-embedded rat brain using NCAM1/CD56 Rabbit polyclonal antibody (STJ24694) at dilution of 1:100 (40x lens). Perform microwave antigen retrieval with 10 mM Tris/EDTA buffer pH 9.0 before commencing with immunohistochemistry staining protocol.



Western blot analysis of extracts of mouse brain, using NCAM1/CD56 antibody (STJ24694). Secondary antibody: HRP-Goat Anti-Rabbit IgG (H+L) (STJS000856) at 1:10000 dilution. Lysates/proteins: 25 Mu g per lane. Blocking buffer: 3% nonfat dry milk in TBST.

This product is suitable for in-vitro studies under the RESEARCH USE ONLY [RUO] licence. This product must not be used as for diagnostic or other medical purposes.
St John's Laboratory Ltd, Knowledge Dock Business Centre, University Way, London, E16 2RD | Tel: 0208 223 3081