

## Anti-NBR1 antibody (1-966) (STJ24692)

STJ24692

### GENERAL INFORMATION

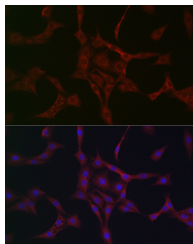
<b>Product Type</b>	Primary antibodies
<b>Short Description</b>	
<b>Applications</b>	WB/IHC-P/IF/ICC/ELISA
<b>Host/Source</b>	Rabbit
<b>Reactivity</b>	Human/Mouse/Rat

### PRODUCT PROPERTIES

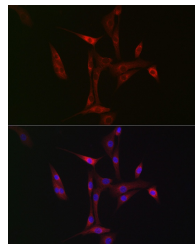
<b>Clonality</b>	Polyclonal
<b>Clone ID</b>	
<b>Concentration</b>	Lot specific
<b>Conjugation</b>	Unconjugated
<b>Purification</b>	Affinity purification
<b>Dilution Range</b>	WB:1:100-1:500 IHC-P:1:50-1:200 IF/ICC:1:50-1:200 ELISA:Recommended starting concentration is 1 Mu g/mL. Please optimize the concentration based on your specific assay requirements.
<b>Formulation</b>	PBS with 0.02% Sodium Azide, 50% Glycerol, pH 7.3.
<b>Isotype</b>	IgG
<b>Storage Instruction</b>	Store at -20°C for up to 1 year from the date of receipt, and avoid repeat freeze-thaw cycles.

### TARGET INFORMATION

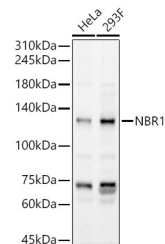
<b>Gene ID</b>	4077
<b>Gene Symbol</b>	NBR1
<b>Uniprot ID</b>	NBR1_HUMAN
<b>Immunogen</b>	
<b>Immunogen Region</b>	1-966
<b>Specificity</b>	Recombinant fusion protein containing a sequence corresponding to amino acids 1-85 of human NBR1 (NP_005890.2).
<b>Immunogen Sequence</b>	MEPQVTLNVTFKNEIQSFLV SDPENTTWADIEAMVKVSFD LNTIQIKYLDEENEEVSINS QGEYEEALKMAVKQGNQLQM QVHEG



Immunofluorescence analysis of PC-12 cells using NBR1 Rabbit polyclonal antibody (STJ24692) at dilution of 1:50 (40x lens). Blue: DAPI for nuclear staining.



Immunofluorescence analysis of NIH/3T3 cells using NBR1 Rabbit polyclonal antibody (STJ24692) at dilution of 1:50 (40x lens). Blue: DAPI for nuclear staining.



Western blot analysis of various lysates, using NBR1 antibody (STJ24692) at 1:400 dilution. Secondary antibody: HRP Goat Anti-Rabbit IgG (H+L) (STJS000656) at 1:10000 dilution. Lysates/proteins: 25 Mu g per lane. Blocking buffer: 3% nonfat dry milk in TBST. Detection: ECL Basic Kit. Exposure time: 60s.