

Anti-MSR1 antibody (90-274) (STJ24620)

STJ24620

GENERAL INFORMATION

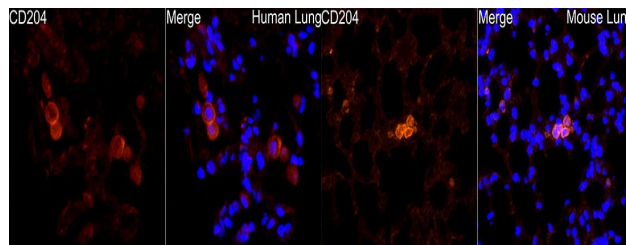
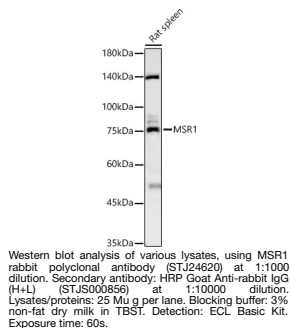
Product Type	Primary antibodies
Short Description	
Applications	WB/IF/ICC/ELISA
Host/Source	Rabbit
Reactivity	Human/Mouse/Rat

PRODUCT PROPERTIES

Clonality	Polyclonal
Clone ID	
Concentration	Lot specific
Conjugation	Unconjugated
Purification	Affinity purification
Dilution	WB: 1:500-1:1000
Range	IF/CC: 1:50-1:200
	ELISA: Recommended starting concentration is 1 µg/mL. Please optimize the concentration based on your specific assay requirements.
Formulation	PBS with 0.09% Sodium Azide, 50% Glycerol, pH 7.3.
Isotype	IgG
Storage Instruction	Store at -20°C for up to 1 year from the date of receipt, and avoid repeat freeze-thaw cycles.

TARGET INFORMATION

Gene ID	4481
Gene Symbol	MSR1
Uniprot ID	MSRE_HUMAN
Immunogen	
Immunogen Region	90-274
Specificity	Recombinant fusion protein containing a sequence corresponding to amino acids 90-274 of human MSR1 (NP_619729.1).
Immunogen Sequence	ANDITQSLTGKGNDSSEEMR FQEVFMEHMSNMEKRIQHIL DMEANLMDTEHFQNFMTTD QRFNDILLQLSTLFSSVQGH GNAIDEISKSLISLNTLLD LQLNIENLNGKIQENTFKQQ EEISKLEERVYNVSAEIMAM KEEQVHLEQEIKGEVKVLNN ITNDRLLKDWHSQTLRNIT LIQGP



Immunofluorescence analysis of human lung cells using MSR1 rabbit polyclonal antibody (STJ24620) at dilution of 1:200 (40x lens). Blue: DAPI for nuclear staining.

Immunofluorescence analysis of mouse lung cells using MSR1 rabbit polyclonal antibody (STJ24620) at dilution of 1:200 (40x lens). Blue: DAPI for nuclear staining.

This product is suitable for in-vitro studies under the RESEARCH USE ONLY [RUO] licence. This product must not be used as for diagnostic or other medical purposes.

St John's Laboratory Ltd, Knowledge Dock Business Centre, University Way, London, E16 2RD | Tel: 0208 223 3081