

Anti-MMP3 antibody (385-477) (STJ24589)

STJ24589

GENERAL INFORMATION

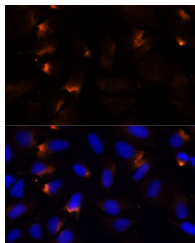
Product Type	Primary antibodies
Short Description	
Applications	WB/IHC-P/IF/ICC/ELISA
Host/Source	Rabbit
Reactivity	Human/Mouse/Rat

PRODUCT PROPERTIES

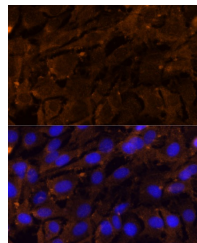
Clonality	Polyclonal
Clone ID	
Concentration	Lot specific
Conjugation	Unconjugated
Purification	Affinity purification
Dilution Range	WB:1:500-1:1000 IHC-P:1:50-1:200 IF/ICC:1:50-1:100 ELISA:Recommended starting concentration is 1 Mu g/mL. Please optimize the concentration based on your specific assay requirements.
Formulation	PBS with 0.02% Sodium Azide, 50% Glycerol, pH 7.3.
Isotype	IgG
Storage Instruction	Store at -20°C for up to 1 year from the date of receipt, and avoid repeat freeze-thaw cycles.

TARGET INFORMATION

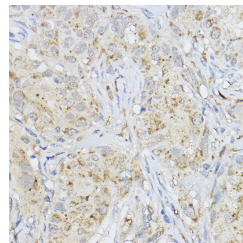
Gene ID	4314
Gene Symbol	MMP3
Uniprot ID	MMP3_HUMAN
Immunogen	
Immunogen Region	385-477
Specificity	Recombinant fusion protein containing a sequence corresponding to amino acids 385-477 of human MMP3 (NP_002413.1).
Immunogen Sequence	VRKIDAAISDKEKNKTYFFV EDKYWRFDEKRNSMEPGFPG QIAEDFGIDSKIDAVFEFF GFFYFFTGSSQLEFDPNNAKK VTHTLKSNSWLNC



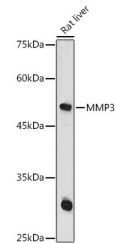
Immunofluorescence analysis of U-2 OS cells using MMP3 Polyclonal Antibody (STJ24589) at dilution of 1:100 (40x lens). Blue: DAPI for nuclear staining.



Immunofluorescence analysis of C6 cells using MMP3 Polyclonal Antibody (STJ24589) at dilution of 1:100 (40x lens). Blue: DAPI for nuclear staining.



Immunohistochemistry analysis of paraffin-embedded human breast cancer using MMP3 Rabbit polyclonal antibody (STJ24589) at dilution of 1:200 (40x lens). Perform high pressure antigen retrieval with 10 mM citrate buffer pH 6.0 before commencing with immunohistochemistry staining protocol.



Western blot analysis of extracts of Rat liver, using MMP3 antibody (STJ24589) at 1:1000 dilution. Secondary antibody: HRP Goat Anti-Rabbit IgG (H+L) (STJ5000856) at 1:10000 dilution. Lysates/proteins: 25 Mu g per lane. Blocking buffer: 3% nonfat dry milk in TBST. Detection: ECL Enhanced Kit. Exposure time: 180s.

This product is suitable for in-vitro studies under the RESEARCH USE ONLY [RUO] licence. This product must not be used as for diagnostic or other medical purposes.

St John's Laboratory Ltd, Knowledge Dock Business Centre, University Way, London, E16 2RD | Tel: 0208 223 3081