

## Anti-MMP14 antibody (75-174) (STJ24578)

STJ24578

### GENERAL INFORMATION

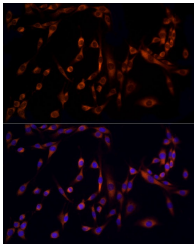
<b>Product Type</b>	Primary antibodies
<b>Short Description</b>	
<b>Applications</b>	WB/IHC-P/IF/ICC/ELISA
<b>Host/Source</b>	Rabbit
<b>Reactivity</b>	Human/Mouse/Rat

### PRODUCT PROPERTIES

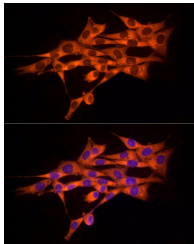
<b>Clonality</b>	Polyclonal
<b>Clone ID</b>	
<b>Concentration</b>	Lot specific
<b>Conjugation</b>	Unconjugated
<b>Purification</b>	Affinity purification
<b>Dilution Range</b>	WB:1:500-1:1000 IHC-P:1:50-1:200 IF/ICC:1:50-1:200 ELISA:Recommended starting concentration is 1 µg/mL. Please optimize the concentration based on your specific assay requirements.
<b>Formulation</b>	PBS with 0.05% Proclin300, 50% Glycerol, pH 7.3.
<b>Isotype</b>	IgG
<b>Storage Instruction</b>	Store at -20°C for up to 1 year from the date of receipt, and avoid repeat freeze-thaw cycles.

### TARGET INFORMATION

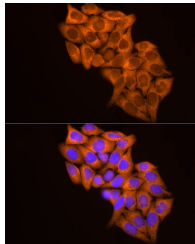
<b>Gene ID</b>	4323
<b>Gene Symbol</b>	MMP14
<b>Uniprot ID</b>	MMP14_HUMAN
<b>Immunogen</b>	
<b>Immunogen Region</b>	75-174
<b>Specificity</b>	A synthetic peptide corresponding to a sequence within amino acids 75-174 of human MMP14/MMP14/MT1-MMP (NP_004986.1). QVTGKADADTMKAMRRPRCG VPDKFGAEIKANVRRKRYAI QGLKWQHNEITFCIQNYTPK VGEYATYEAIRKAFRVWESA
<b>Immunogen Sequence</b>	TPLRFREVPYAYIREGHEKQ



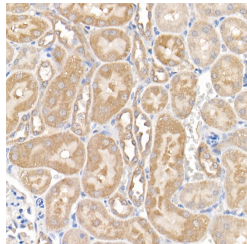
Immunofluorescence analysis of PC-12 cells using MMP14/MT1-MMP Rabbit polyclonal antibody (STJ24578) at dilution of 1:100 (40x lens). Secondary antibody: Cy3 Goat Anti-Rabbit IgG (H+L) at 1:500 dilution. Blue: DAPI for nuclear staining.



Immunofluorescence analysis of NIH/3T3 cells using MMP14/MT1-MMP Rabbit polyclonal antibody (STJ24578) at dilution of 1:100 (40x lens). Secondary antibody: Cy3 Goat Anti-Rabbit IgG (H+L) at 1:500 dilution. Blue: DAPI for nuclear staining.



Immunofluorescence analysis of HeLa cells using MMP14/MT1-MMP Rabbit polyclonal antibody (STJ24578) at dilution of 1:100 (40x lens). Secondary antibody: Cy3 Goat Anti-Rabbit IgG (H+L) at 1:500 dilution. Blue: DAPI for nuclear staining.



Immunohistochemistry analysis of MMP14/MT1-MMP in paraffin-embedded rat kidney using MMP14/MT1-MMP Rabbit polyclonal antibody (STJ24578) at dilution of 1:200 (40x lens). Perform high pressure antigen retrieval with 10 mM citrate buffer pH 6.0 before commencing with immunohistochemistry staining protocol.

This product is suitable for in-vitro studies under the RESEARCH USE ONLY [RUO] licence. This product must not be used as for diagnostic or other medical purposes.  
St John's Laboratory Ltd, Knowledge Dock Business Centre, University Way, London, E16 2RD | Tel: 0208 223 3081