

Anti-MIF antibody (1-115) (STJ24553)

STJ24553

GENERAL INFORMATION

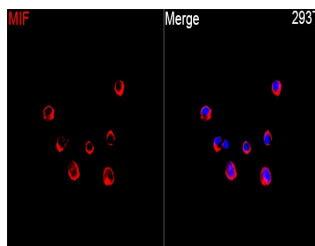
Product Type	Primary antibodies
Short Description	
Applications	WB/IF/ICC/ELISA
Host/Source	Rabbit
Reactivity	Human/Mouse/Rat

PRODUCT PROPERTIES

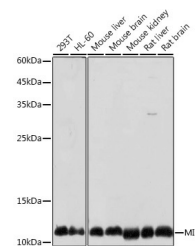
Clonality	Polyclonal
Clone ID	
Concentration	Lot specific
Conjugation	Unconjugated
Purification	Affinity purification
Dilution Range	WB:1:500-1:1000 IF/CC:1:50-1:200 ELISA:Recommended starting concentration is 1 µg/mL. Please optimize the concentration based on your specific assay requirements.
Formulation	PBS with 0.09% Sodium Azide, 50% Glycerol, pH 7.3.
Isotype	IgG
Storage Instruction	Store at -20°C for up to 1 year from the date of receipt, and avoid repeat freeze-thaw cycles.

TARGET INFORMATION

Gene ID	4282
Gene Symbol	MIF
Uniprot ID	MIF_HUMAN
Immunogen	
Immunogen Region	1-115
Specificity	Recombinant fusion protein containing a sequence corresponding to amino acids 1-115 of human MIF (NP_002406.1).
Immunogen Sequence	MPMFIVNTNVPRAVDPDGL SELTQQLAQATGKPPQYIAV HVVPDQLMAFGGSSEPCALC SLHSIGKIGGAQNRYSKLL CGLLAERLRISPDRVYINYY DMNAANVGWNNSTFA



Immunofluorescence analysis of 293T cells using Anti-MIF Rabbit polyclonal antibody (STJ24553) at 1:100 (40x lens). Secondary antibody: Cy3 Goat Anti-Rabbit IgG (H+L) at 1:500 dilution. Blue: DAPI for nuclear staining.



Western blot analysis of various lysates using Anti-MIF Rabbit polyclonal antibody (STJ24553) at 1:1000 dilution. Secondary antibody: HRP Goat Anti-Rabbit IgG (H+L) (STJ5000856) at 1:10000 dilution. Lysates/proteins: 25 µg per lane. Blocking buffer: 3% nonfat dry milk in TBST. Detection: ECL Basic Kit. Exposure time: 10s.

This product is suitable for in-vitro studies under the RESEARCH USE ONLY [RUO] licence. This product must not be used as for diagnostic or other medical purposes.
St John's Laboratory Ltd, Knowledge Dock Business Centre, University Way, London, E16 2RD | Tel: 0208 223 3081