

Anti-MEF2C antibody (170-380) (STJ24543)

STJ24543

GENERAL INFORMATION

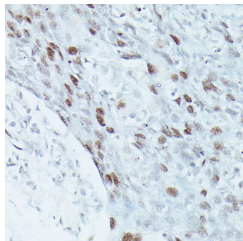
Product Type	Primary antibodies
Short Description	
Applications	WB/IHC-P/ELISA
Host/Source	Rabbit
Reactivity	Human/Mouse/Rat

PRODUCT PROPERTIES

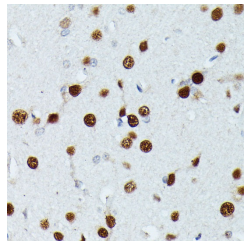
Clonality	Polyclonal
Clone ID	
Concentration	Lot specific
Conjugation	Unconjugated
Purification	Affinity purification
Dilution	WB:1:500-1:2000
Range	IHC-P:1:50-1:200
	ELISA:Recommended starting concentration is 1 Mu g/mL. Please optimize the concentration based on your specific assay requirements.
Formulation	PBS with 0.09% Sodium Azide, 50% Glycerol, pH 7.3.
Isotype	IgG
Storage Instruction	Store at -20°C for up to 1 year from the date of receipt, and avoid repeat freeze-thaw cycles.

TARGET INFORMATION

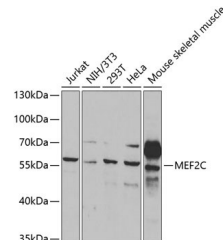
Gene ID	4208
Gene Symbol	MEF2C
Uniprot ID	MEF2C_HUMAN
Immunogen	
Immunogen Region	170-380
Specificity	A synthetic peptide corresponding to a sequence within amino acids 170-380 of human MEF2C (NP_002388.2).
Immunogen Sequence	LPLAHPSLQRNSMSGVTHR PPSAGNTGGLMGGDLTSGAG TSAGNGYGNPRNSPGLLVSP GNLNKNMQAKSPPPMNLGMN NRKPDRLRVLPFGSKNTMPS VSEDVDLLNQRRINNSQSAQ SLATPVVSVATPTLPQGQGMG GYPSAISTTYGTEYSLSSAD LSSLGFGNTASALHLGSVTG WQQQHLHNMPPSALSQGLGAC TSTHLSQSSNL



Immunohistochemistry analysis of MEF2C in paraffin-embedded human breast cancer using MEF2C Rabbit polyclonal antibody (STJ24543) at dilution of 1:100 (40x lens). Perform microwave antigen retrieval with 10 mM PBS buffer pH 7.2 before commencing with immunohistochemistry staining protocol.



Immunohistochemistry analysis of MEF2C in paraffin-embedded rat brain using MEF2C Rabbit polyclonal antibody (STJ24543) at dilution of 1:100 (40x lens). Perform microwave antigen retrieval with 10 mM PBS buffer pH 7.2 before commencing with immunohistochemistry staining protocol.



Western blot analysis of various lysates using MEF2C Rabbit polyclonal antibody (STJ24543) at 1:1000 dilution. Secondary antibody: HRP Goat Anti-Rabbit IgG (H+L) (STJ5000856) at 1:10000 dilution. Lysates/proteins: 25 Mu g per lane. Blocking buffer: 3% nonfat dry milk in TBST.

This product is suitable for in-vitro studies under the RESEARCH USE ONLY [RUO] licence. This product must not be used as for diagnostic or other medical purposes.
St John's Laboratory Ltd, Knowledge Dock Business Centre, University Way, London, E16 2RD | Tel: 0208 223 3081