

Anti-MDK antibody (23-143) (STJ24532)

STJ24532

GENERAL INFORMATION

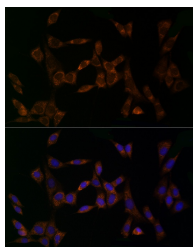
Product Type	Primary antibodies
Short Description	
Applications	WB/IF/ICC/ELISA
Host/Source	Rabbit
Reactivity	Human/Mouse/Rat

PRODUCT PROPERTIES

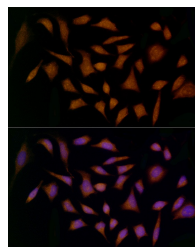
Clonality	Polyclonal
Clone ID	
Concentration	Lot specific
Conjugation	Unconjugated
Purification	Affinity purification
Dilution Range	WB:1:100-1:500 IF/ICC:1:50-1:200 ELISA:Recommended starting concentration is 1 Mu g/mL. Please optimize the concentration based on your specific assay requirements.
Formulation	PBS with 0.09% Sodium Azide, 50% Glycerol, pH 7.3.
Isotype	IgG
Storage Instruction	Store at -20°C for up to 1 year from the date of receipt, and avoid repeat freeze-thaw cycles.

TARGET INFORMATION

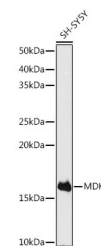
Gene ID	4192
Gene Symbol	MDK
Uniprot ID	MK_HUMAN
Immunogen	
Immunogen Region	23-143
Specificity	Recombinant fusion protein containing a sequence corresponding to amino acids 23-143 of human MDK (NP_001012333.1).
Immunogen Sequence	KKKDKVKKGPGSECAEWAW GPCTPSSKDCGVGFREGTCG AQTQRIRCRVPCNWKKEFGA DCKYKFENWGACDGGTGTKV RQGTLLKKARYNAQCQETIRV TKPCTPKTKAKAKAKKGKKGK D



Immunofluorescence analysis of NIH/3T3 cells using MDK Rabbit polyclonal antibody (STJ24532) at dilution of 1:20 (40x lens). Blue: DAPI for nuclear staining.



Immunofluorescence analysis of HeLa cells using MDK Rabbit polyclonal antibody (STJ24532) at dilution of 1:20 (40x lens). Blue: DAPI for nuclear staining.



Western blot analysis of extracts of SH-SY5Y cells, using MDK antibody (STJ24532) at 1:500 dilution. Secondary antibody: HRP Goat Anti-Rabbit IgG (H+L) (STJS000856) at 1:10000 dilution. Lysates/proteins: 25 Mu g per lane. Blocking buffer: 3% nonfat dry milk in TBST. Detection: ECL Enhanced Kit. Exposure time: 180s.